

Addendum 1

Owner Information	INDIANA UNIVERSITY
Contractor Information	N/A

DATE	11/19/2024
PROJECT NAME	IU BI065 OPTOMETRY SCHOOL LAR LAB HUMIDIFIER REPLACEMENT
INTROBA PROJECT #	2035.0012888
IU PROJECT #	20231438
DISTRIBUTION	Owner
ADDENDUM CONSIST OF	(6) 8.5 X 11 PAGES AND (1) 30X42 FULL-SIZE SHEETS

The following additions, revisions, and modifications are part of the contract documents, which shall be amended accordingly. Acknowledge receipt of addenda on the bid form. Failure to acknowledge receipt of this addendum may result in the rejection of your offer.

GENERAL


1. Pre-Bid Meeting Agenda:
 - a. Updated the agenda to include meeting notes taken during the meeting.
2. Pre-Bid Meeting Sign-in Sheet:
 - a. Pre-Bid Meeting sign-in sheet is included in Addendum 1 documentation.

SPECIFICATIONS

1. None.

DRAWINGS

1. M110 – MECHANICAL SCHEDULES:
 - a. Sheet Keynotes. Updated keynote #1 to address removal of existing steam generator condensate drain piping and the remaining existing condensate drain piping from other equipment and floor drain shall be existing to remain.
 - b. Sheet Keynotes. Updated keynote #12 to include the RO skid basis of design as well as additional RO skid information.

SIGNATURE Christopher Hawk 



8250 Haverstick Road
Indianapolis, IN 46240
P: 317-638-8383

Pre-Bid Meeting Agenda

Meeting Name	IU BL065 Optometry School LAR LAB Humidifier Replacement IU Project #20231438
Meeting Date(s)	November 14, 2024
Meeting Time	1:30 PM EST
Meeting Location	800 Atwater Ave. Bloomington, IN 47405
By	Samuel Hubbe

Meeting Agenda

- A. Sign-In Sheet
- B. Contacts/Project Team
 - 1. Indiana University
 - a. Darby Simpson, IU Capital Projects and Facilities, Engineering Services: darbsimp@iu.edu, (812) 856-5893.
 - b. David Riffel, IU Capital Projects and Facilities, Engineering Services: dariffel@iu.edu, (812) 856-5893.
 - c. Nathan Smith, IU Capital Projects and Facilities, Engineering Services: ns9@iu.edu, (812) 856-5893.
 - d. Carrie Lucero, Operations Manager, Laboratory Animal Resources: capell@iu.edu, (812) 856-1129.
 - 2. Introba, MEP Engineers
 - a. Christopher Hawk: christopher.hawk@introba.com, (317) 735-6473
 - b. Samuel Hubbe: samuel.hubbe@introba.com, (630) 638-8383
- C. General Project Scope Overview
 - 1. Demolition of existing steam generator and dispersion grid.
 - 2. Selective demolition of ductwork, piping, and compressed air.
 - 3. New wall-mounted steam generator, duct-mounted dispersion grid, and floor-mounted RO skid.
 - 4. New steam piping and condensate drain piping routed to and from equipment.
 - 5. New domestic cold-water piping and reduced pressure backflow preventer routed to equipment.
 - 6. New stainless steel ductwork.
 - 7. New equipment pad for RO skid. New wall mount/support.
 - 8. Selective demolition of electrical connections, disconnect switch, conduit, wiring, etc.
 - 9. New electrical connections to replaced equipment.



D. Refer to "Notice to Bidders"

1. Bid documents are available online: www.iuplanroom.com.
2. Bids are due at 2:00 PM (local time) on November 21, 2024.
3. Bids received after that time will not be accepted.
4. Bid results will be published on the following link below:
 - a. www.iuplanroom.com.
5. Submit bids to www.iuplanroom.com.
6. Refer to specifications for all bidder requirements and instructions including insurance, bidder qualifications, security and bonding.

E. Project Schedule

1. Preliminary overall construction phases are indicated in documents.
 - a. Onsite work can start from the date that the contract is signed.
 - b. Onsite work to be completed no later than April 30, 2025.
2. Contractor to submit detailed construction schedule as part of bid.

F. Logistics Overview

1. Contractor to protect all existing finishes and major furnishings.
2. Dumpster to be provided by Contractor, location to be coordinated with IU staff.
3. Clean-up will be required after each shift.
4. Access and work hours.

G. Questions

1. Submit questions via email to Darby Simpson at IU, or Christopher Hawk at Introba, CC Samuel Hubbe and Beth Fitzsimmons.
 - a. darbsimp@iu.com
 - b. christopher.hawk@introba.com
 - c. samuel.hubbe@introba.com
 - d. beth.fitzsimmons@introba.com
2. All questions must be received by noon on November 18, 2024.

H. Bidder Questions

I. Site Walkthrough

J. Notes from Pre-Bid Meeting

1. Contractors shall coordinate construction schedule and noise with IU and users.
2. Some walls are full height to deck which will require penetrating/core drilling.

3. Existing steam generator condensate drain piping will be removed completely. Remaining condensate drain piping that is connected to other equipment and the floor drain will remain as existing.
4. Controls scope is handled by IU (Ken Horrocks).

IU BL065 Optometry School LAR LAB Humidifier Replacement

Name/Company	Email	Phone Number
David DeRear/Hershey	dnderpere@heliwind.com	812 825-1600
David Ketter IU	DAK1F@IU.EDU	812 325-5560
Tom Hall	THall@IrishMechanicalServices.com	317-306-1357
Darcy Simpson	XXXXXXXXXX darcysimp@iu.edu	765-341-1341
Sam Hubbe	samuel.hubbe@ntkoba.com	630-945-0197
Tyle Douglas	tdouglas@commercialservices.com	812-327-0964
Steel Works	Steelworks@electricalplus.com	812-327-4267
Carnie Lucero/IU LAR	cappel@iu.edu	812-852-1129



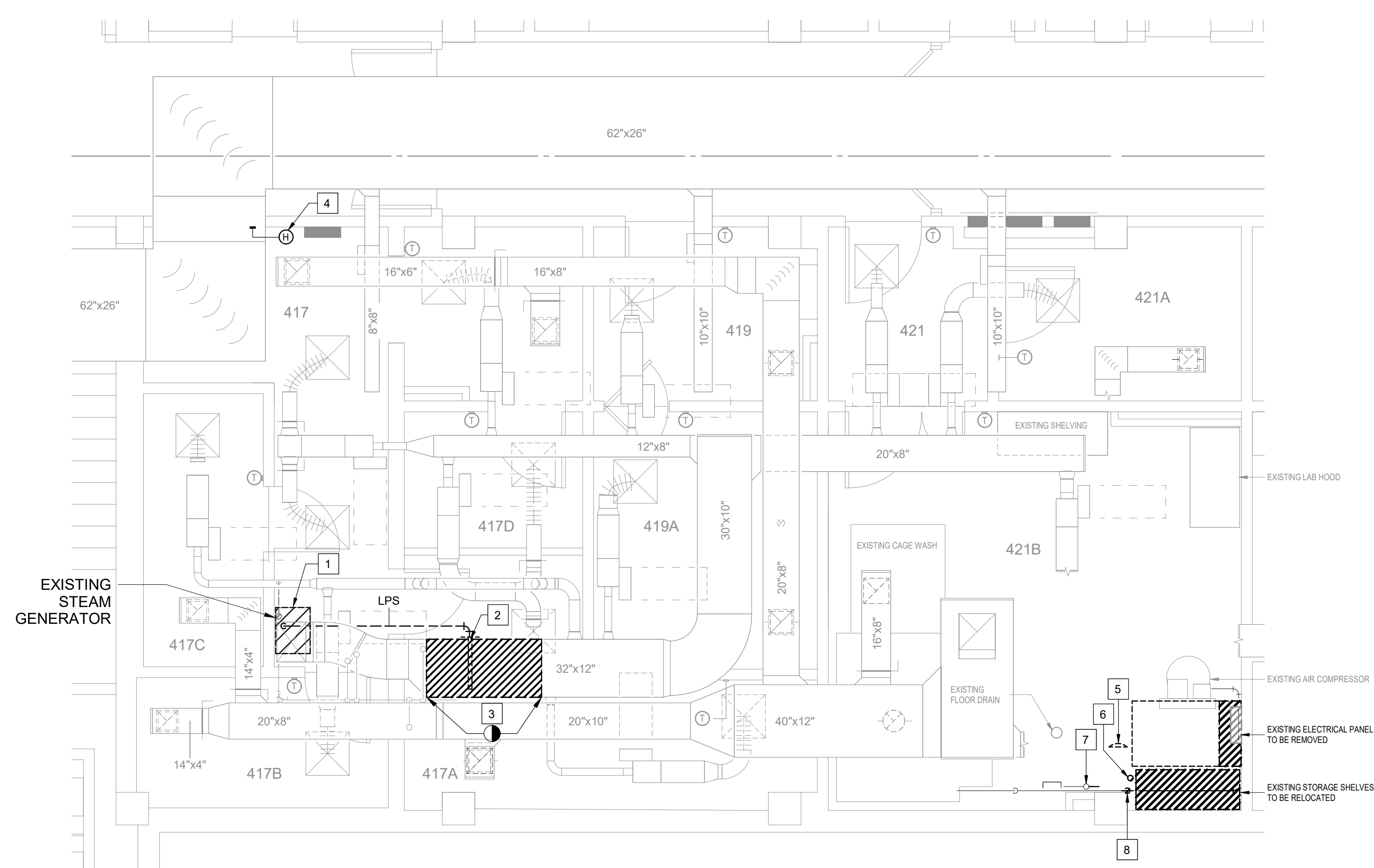
INDIANA UNIVERSITY
BLOOMINGTON, INDIANA

GENERAL SHEET NOTES

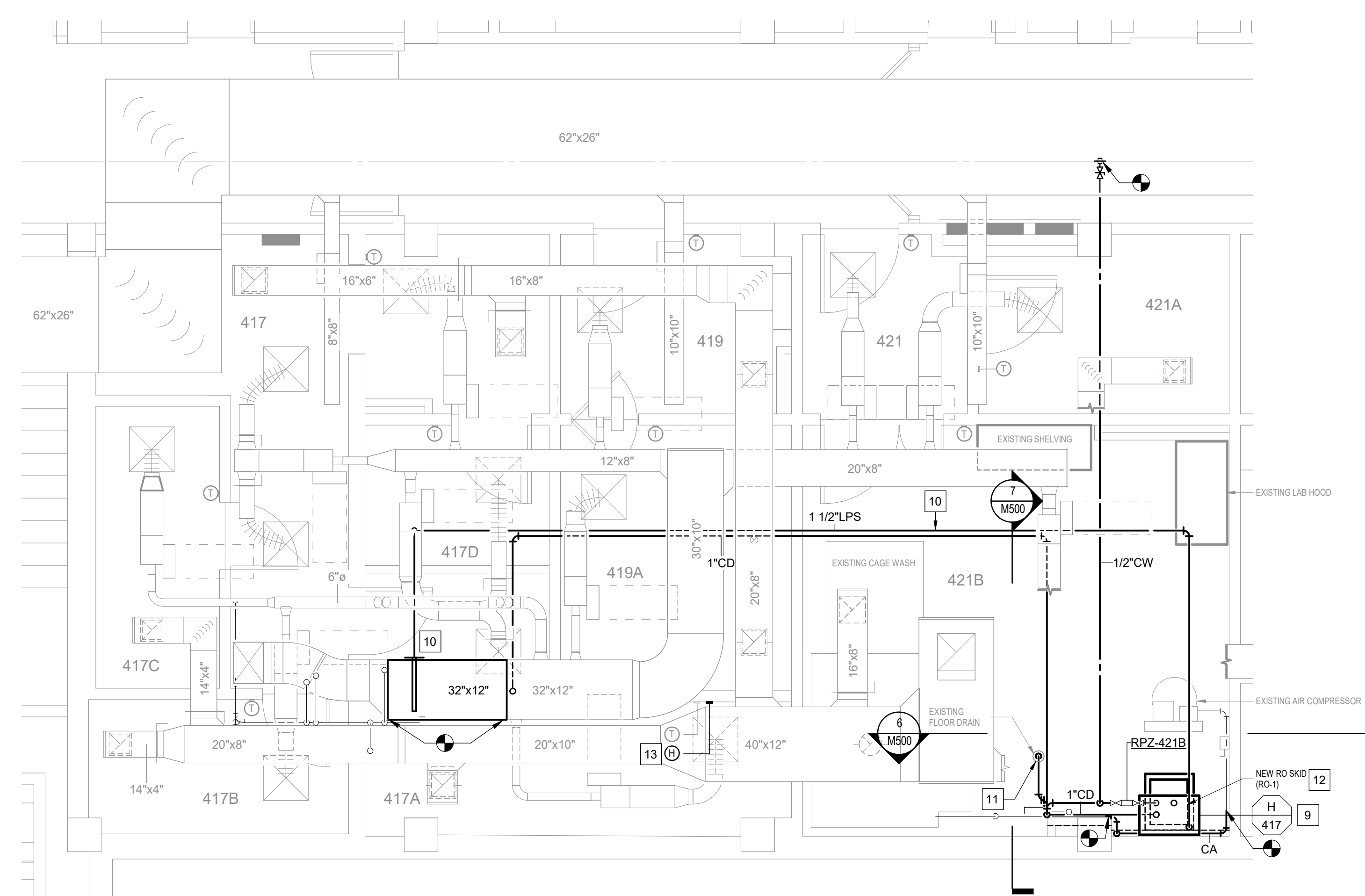
- REFER TO SHEETS M000 & E000 FOR PROJECT GENERAL NOTES.
- REMOVE CEILING AS REQUIRED FOR MECHANICAL WORK ABOVE THE CEILING. COORDINATE WITH DIVISION 26. REINSTALL THE EXISTING CEILING TILES AND GRIDS AT COMPLETION. PROVIDE NEW CEILING IF ANY WERE DAMAGED DURING CONSTRUCTION.
CEILING SYSTEM IN CORRIDOR AND LAB SPACES SHALL BE RESTORED TO ORIGINAL CONDITION UPON COMPLETION OF PROJECT.
IT IS THE RESPONSIBILITY OF THE CONTRACTOR TO SAFELY STORE THE CEILING TILES AND T-BAR DURING CONSTRUCTION. TILES SHALL BE RESTORED UPON COMPLETION OF THE PROJECT.
BROKEN OR DAMAGED TILES SHALL BE REPLACED BY THE CONTRACTOR WITH NEW TILES THAT MATCH EXISTING TYPE, THICKNESS, AND SPECIFICATION. CEILING TILES SHALL BE A SPECIAL WASH-DOWN CEILING TILES OR APPROVED EQUAL.

SHEET KEYNOTES

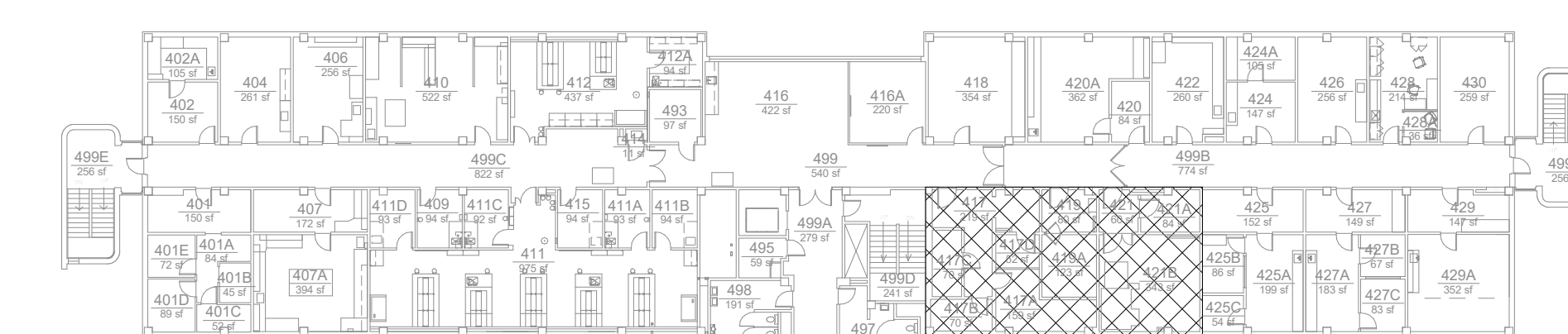
- REMOVE EXISTING STEAM GENERATOR, ASSOCIATED STEAM PIPING, MAKEUP WATER PIPING, CONDENSATE DRAIN PIPING, CONTROLS, AND ACCESSORIES COMPLETELY. PATCH AND PAINT WALLS AS REQUIRED. CAP CONDENSATE DRAIN PIPING AT PIPING CONNECTION. EXISTING CONDENSATE DRAIN PIPING CONNECTIONS TO OTHER EQUIPMENT AND FLOOR DRAIN SHALL BE EXISTING TO REMAIN.
- REMOVE EXISTING STEAM DISPERSION GRID, ASSOCIATED STEAM PIPING, AND ACCESSORIES COMPLETELY.
- REMOVE EXISTING DUCTWORK TO POINTS INDICATED. INSTALL NEW STAINLESS STEEL DUCTWORK IN NEW WORK.
- RELOCATE EXISTING HUMIDISTAT TO LOCATION IN NEW WORK.
- REMOVE EXISTING HANGER AND SUPPORT COMPLETELY.
- REMOVE EXISTING BLACK PIPING AND CAP IN CEILING SPACE. REPLACE CEILING TILE WITH NEW. CEILING TILE SHALL MATCH EXISTING TYPE, THICKNESS, AND SPECIFICATION. CEILING TILE SHALL BE A SPECIAL WASH-DOWN CEILING TILE OR APPROVED EQUAL.
- REMOVE PIPING, VALVE, AND PIPING TEE. REPLACE PIPING TEE WITH STRAIGHT PIPE. SHUT CONDENSATE PUMP DOWN DURING DEMOLITION AND NEW WORK.
- REMOVE COMPRESSED AIR PIPING TO POINTS INDICATED. REROUTE COMPRESSED AIR PIPING TIGHT TO WALL IN NEW WORK. WRAP AROUND COLUMN AND RECONNECT ONTO EXISTING COMPRESSED AIR PIPING TO POINTS INDICATED.
- NEW WALL MOUNTED STEAM HUMIDIFIER. CONNECT ONTO NEW RO SKID AND ROUTE NEW LOW PRESSURE STEAM ABOVE CEILING TO STEAM DISPERSION GRID IN DUCTWORK. REFER TO SHEET M500 FOR ELEVATION VIEWS OF EQUIPMENT.
- COORDINATE LOCATION OF DISPERSION TUBES IN DUCT WITH MANUFACTURERS MAXIMUM ABSORPTION DISTANCE. PROVIDE MINIMUM 4 FOOT LONG STAINLESS STEEL DUCT SECTION AT DISPERSION TUBE LOCATION OR AS REQUIRED FOR PROPER OPERATION PER DRISTEEM GUIDELINES AND PER DETAIL 2 ON SHEET M500.
- ROUTE CONDENSATE DRAIN PIPING TO DRAKE-KOOLER (PROVIDED BY HUMIDIFIER MANUFACTURER) AND DISCHARGE CONDENSATE DRAIN PIPING TO FLOOR DRAIN.
- NEW RO SKID FOR STEAM GENERATOR. BASIS OF DESIGN DRISTEEM MODEL HYDROTURBO RO 200 SERIES. RO SYSTEM HAS PREFILTER RATING 5 MICRONS, 120W/190HZ, 5.5 FLA, PAINTED STEEL WITH RUBBER BLADDER STORAGE TANK MATERIAL, 1/2" SYSTEM INLET, 3/8" SYSTEM OUTLET. OVERALL DIMENSIONS OF 34"x20"x30", AND OPERATING WEIGHT 180 LBS AS REPRESENTED BY THE HILL COMPANY (THE HILL COMPANY INC., 317-856-5266). MOUNTED ON FLOOR ON EQUIPMENT PAD. ROUTE NEW DOMESTIC COLD WATER PIPING FROM EXISTING DOMESTIC COLD WATER LINE TO RO SKID AND CONNECT RO SKID ONTO NEW WALL MOUNTED STEAM GENERATOR. INSTALL NEW REDUCED PRESSURE BACKFLOW PREVENTER AND ROUTE DRAIN TO EXISTING FLOOR DRAIN. REFER TO SHEET M500 FOR ELEVATION VIEWS OF EQUIPMENT.
- RELOCATED EXISTING HUMIDISTAT.



1 MECHANICAL DEMOLITION PLAN LEVEL 4
1/4" = 1'-0"



2 MECHANICAL NEW WORK PLAN LEVEL 4
1/4" = 1'-0"



LEVEL 4 KEY PLAN

1	Addendum 1		11/19/2024
NO	REVISION	CHK	DATE

Introba
Indianapolis
8250 Haverstick Road, Suite 285
Indianapolis, IN, 46240
t: +1 800.404.7677
e: hello@introba.com
www.introba.com

CLIENT: INDIANA UNIVERSITY

PROJECT ADDRESS: 800 Atwater Ave. Bloomington, IN 47405

PROJECT: IU BL065 OPTOMETRY SCHOOL LAR LAB HUMIDIFIER REPLACEMENT PROJECT# 20231438

DATE ISSUED: OCTOBER 25, 2024

DESIGNED	CHKD	APPROVED
SJM	CDH	CDH

100% CONSTRUCTION DOCUMENTS

DRAWING TITLE: MECHANICAL DEMOLITION AND NEW WORK PLAN

DRAWING NO: M110