

ADDENDUM NO. 1

BL602 – Tennis Center – TC Interior Court Resurfacing

Indiana University
Bloomington, Indiana

Project No. 20240256

Index of Contents

Addendum No. 1, 3 items, 2 pages
Revised Drawing Sheets: A1.01
Pre-Bid Sign-in Sheet

Date: March 4, 2025

I hereby certify that this Addendum was prepared by me or under my direct supervision and that I am a duly registered Architect/Engineer under the Laws of the State of Indiana.

FANNING/HOWEY ASSOCIATES, INC.
ARCHITECTS/ENGINEERS/CONSULTANTS



TO: ALL BIDDERS OF RECORD

ADDENDUM NO. 1 to Drawings and Project Manual, dated March 18, 2025, for BL602 – Tennis Center – TC Interior Court Resurfacing for Indiana University, 2901 East Discovery Parkway, Bloomington, Indiana 47408; as prepared by Fanning/Howey Associates, Inc., Indianapolis, Indiana.
This Addendum shall hereby be and become a part of the Contract Documents the same as if originally bound thereto.

The following clarifications, amendments, additions, revisions, changes, and modifications change the original Contract Documents only in the amount and to the extent hereinafter specified in this Addendum.

Each bidder shall acknowledge receipt of this Addendum in his proposal or bid.

NOTE: Bidders are responsible for becoming familiar with every item of this Addendum. (This includes miscellaneous items at the very end of this Addendum.)

RE: ALL BIDDERS

ITEM NO. 1. PROJECT MANUAL, SECTION 32 18 26

- A. Add "2.2, F: Surface color selections –
 - 1. Court Surface Color Selection: Laykold Brick Red
 - 2. Out-of-Bounds / Circulation Surface Color Selection: Laykold Dark Grey
 - 3. Court Lines / Logos: White"
- B. Laykold Color Chart, Attached for reference.

ITEM NO. 2. REVISED DRAWING SHEETS

- A. Drawing Sheet: A1.01 has been revised, dated 3/4/25 and is included with and hereby made a part of this Addendum. This Drawing supersedes the original document.

ITEM NO. 3. PRE-BID SIGN-IN SHEET

- A. Pre-Bid Sign-in Sheet is provided, for reference.

END OF ADDENDUM

Laykold®

OFFICIAL COURT SURFACE OF THE
US OPEN

STANDARD COLORS

Certified Quality

THE WORLD'S MOST TRUSTED COURT SURFACE



LAYKOLD
FOREST GREEN



LAYKOLD
DARK GREEN



LAYKOLD
MEDIUM GREEN



LAYKOLD
GRASS GREEN



LAYKOLD
DARK BLUE



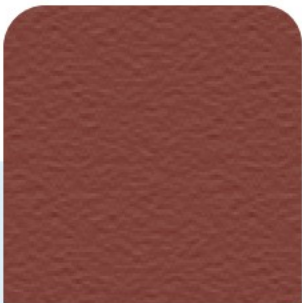
LAYKOLD
LIGHT BLUE



LAYKOLD
PRO BLUE



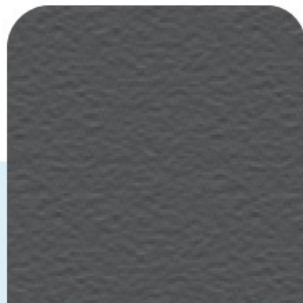
LAYKOLD
ROYAL PURPLE



LAYKOLD
BRICK RED



LAYKOLD
BURGUNDY



LAYKOLD
DARK GREY



LAYKOLD
DESERT SAND



TECH HUB

For color combinations and system information
visit the Laykold Technical Hub.

www.sportgroup-techhub.com/laykold

Colors are as accurate as possible. Slight variations may occur due
to job site conditions, mixing proportions and installation methods.



**CUSTOM
COLORS**
are available

ARCHITECTURAL PLAN GENERAL NOTES

- A. WHERE DISSIMILAR FLOOR MATERIALS MEET, THEY SHALL DO SO UNDER THE CENTERLINE OF THE DOOR, UNLESS NOTED OTHERWISE.
- B. ALL DIMENSIONS ON FLOOR PLANS ARE TO FINISH FACE OF CMU, CONCRETE, BRICK OR FINISH FACE OF GWB AT METAL STUD WALLS, UNLESS NOTED OTHERWISE. EXCEPTION: EXTERIOR METAL STUD WALLS ARE TO FACE OF METAL STUDS.

**INDIANA UNIVERSITY
BL602 - TENNIS
CENTER - TC
INTERIOR COURT
RESURFACING**

INDIANA UNIVERSITY TENNIS CENTER
1833 North Fee Ln,
Bloomington, IN 47408

INDIANA UNIVERSITY



ARCHITECT

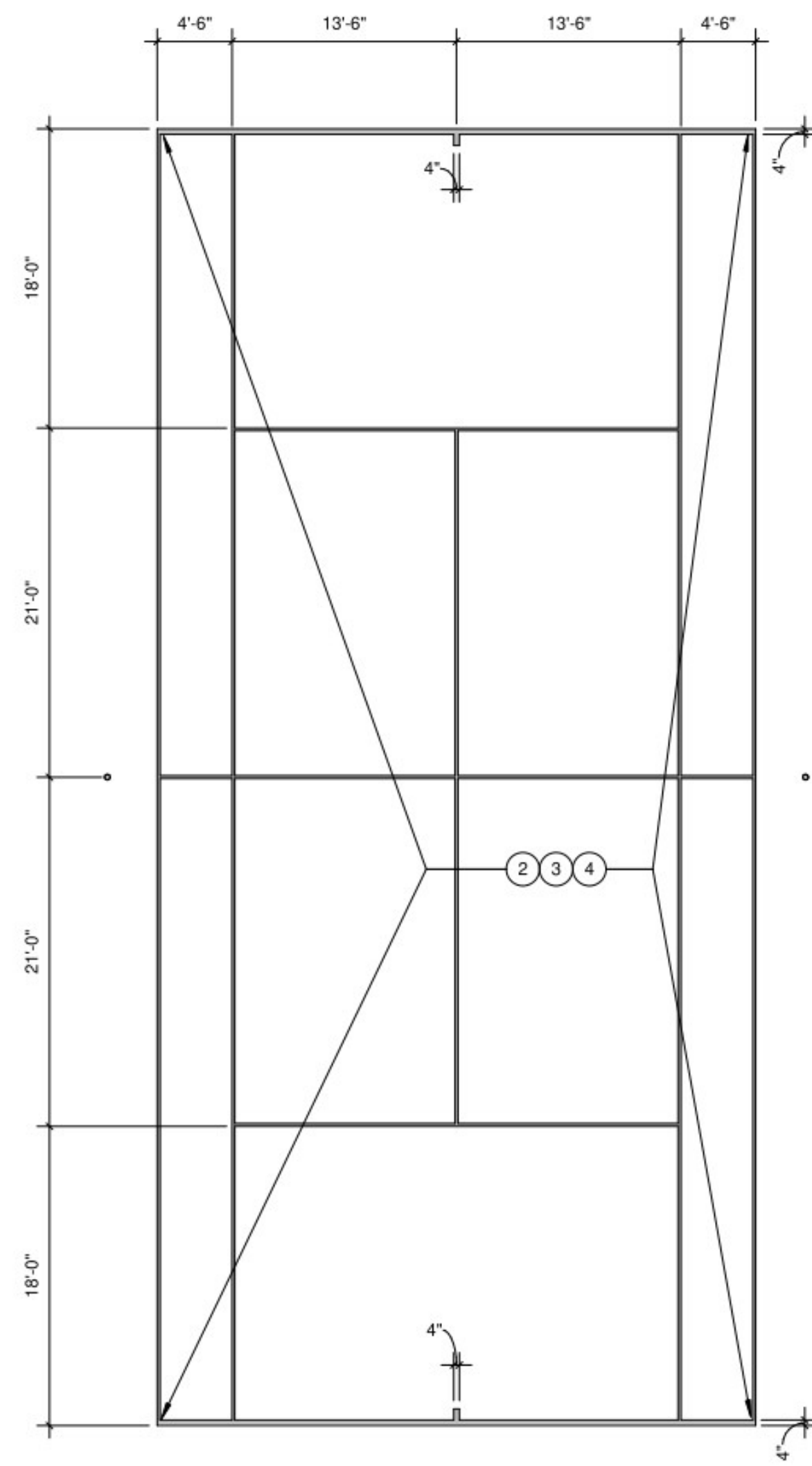


317.848.0966 WWW.FHAI.COM
350 EAST NEW YORK ST, SUITE 300, INDIANAPOLIS, IN 46204

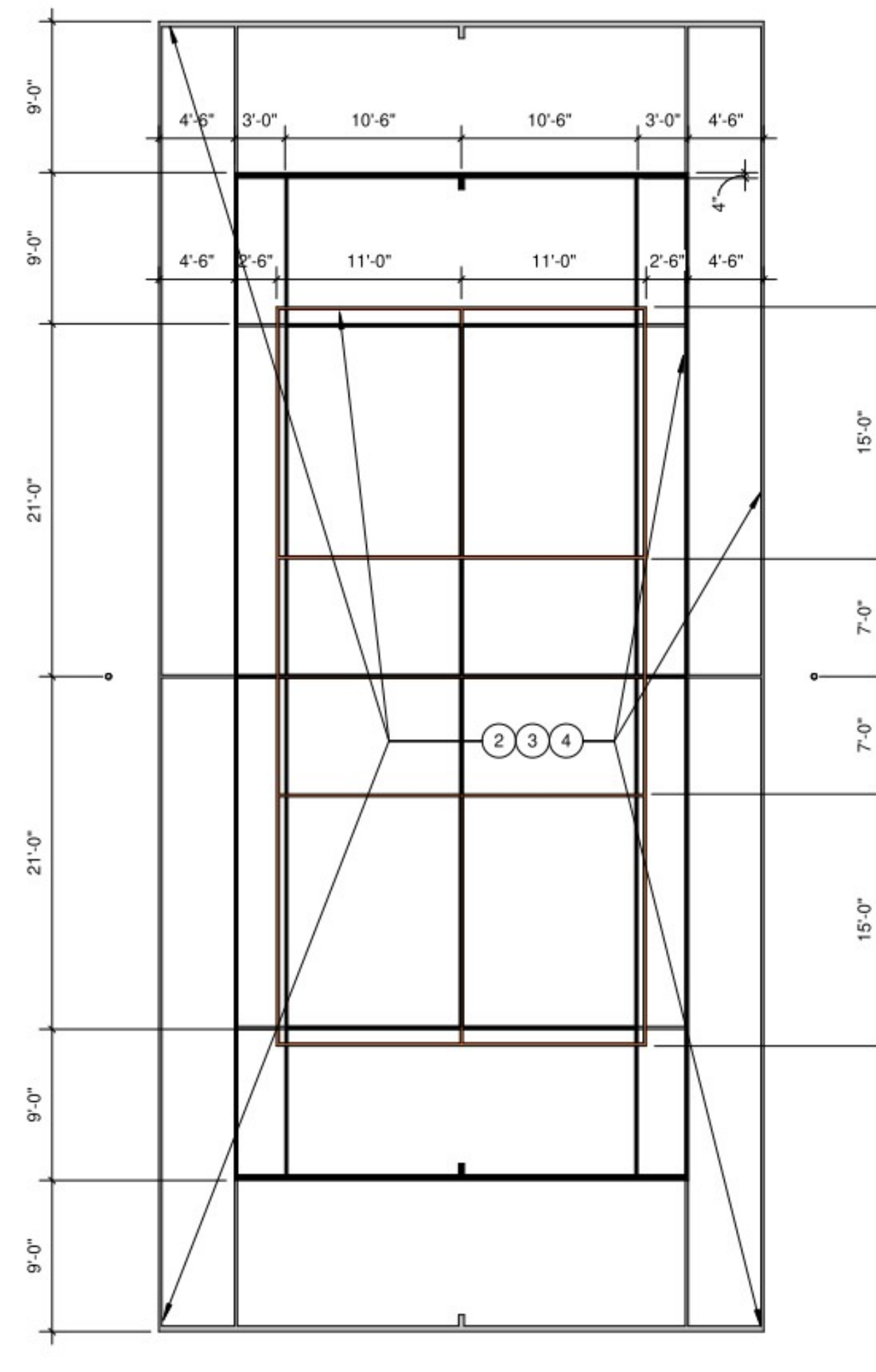
ARCHITECTURAL PLAN NOTES

(ALL NOTES MAY NOT BE INDICATED ON THIS SHEET)

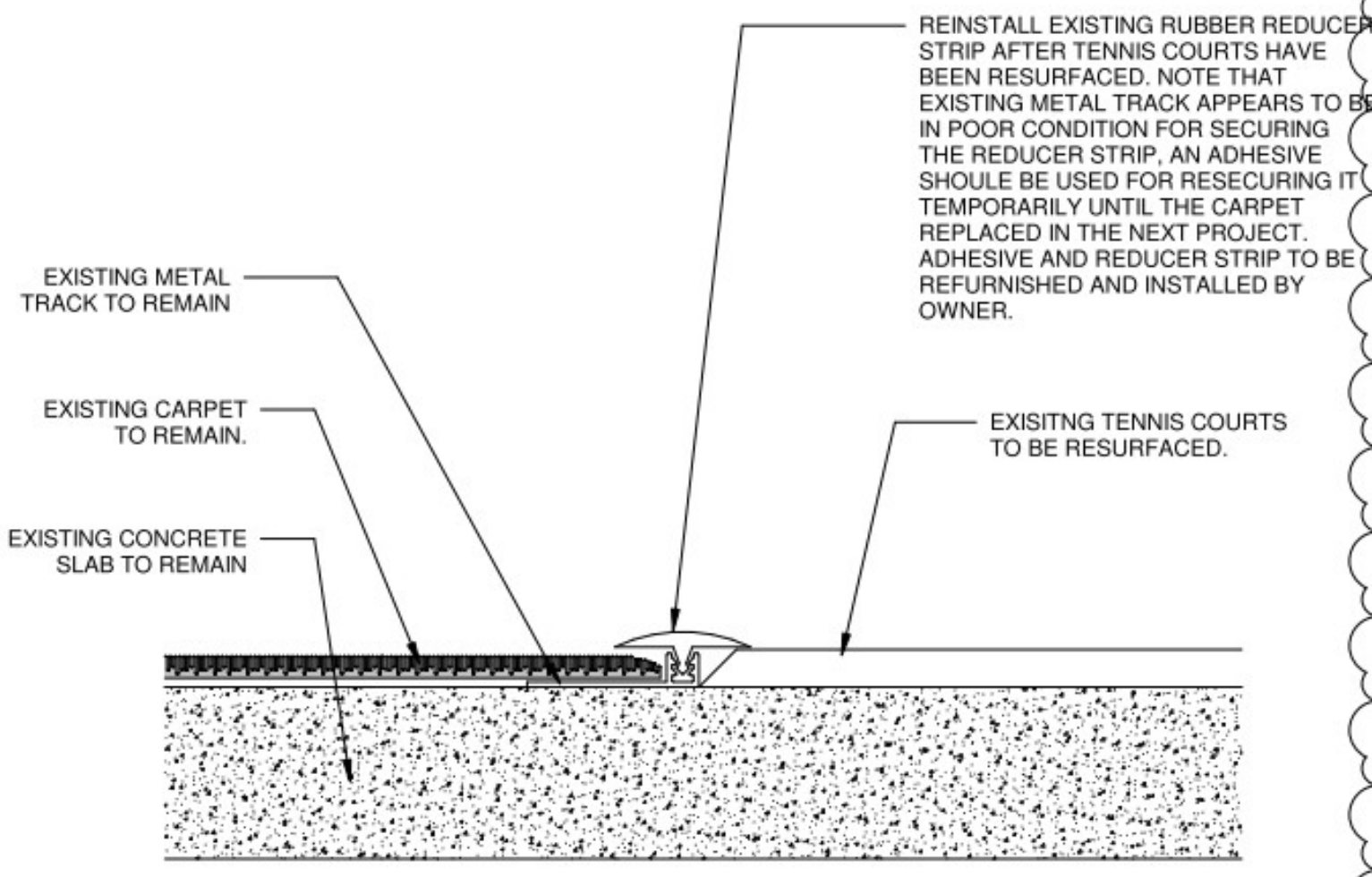
1. GRIND EXISTING TENNIS LABELS, SCHOOL LOGOS, ROUGH AREAS, AND HIGH SPOTS WITH MECHANICAL GRINDER TO PROVIDE A CONSISTENT AND SMOOTH SURFACE. CLEAN AND PREPARE SURFACE ACCORDING TO TENNIS SURFACE COATING MANUFACTURER'S RECOMMENDATIONS.
2. LAY OUT TENNIS COURT IN MARKINGS IN ACCORDANCE WITH USTA RULES OF TENNIS.
3. APPLY LINE MARKING PRIMER AFTER MASKING TAPE HAS BEEN LAID TO SEAL VOIDS BETWEEN MASKING TAPES AND TENNIS COURT SURFACE TO PREVENT BLEED-UNDER WHEN THE INES ARE PAINTED.
4. APPLY TWO COATS OF LINE PAINT IN ACCORDANCE WITH MANUFACTURER'S INSTRUCTIONS.
5. LIFT AND SALVAGE SEPARATION NET DURING CONSTRUCTION.
6. LIFT AND SALVAGE EXISTING CURTAIN AROUND THE PERIMETER DURING CONSTRUCTION.
7. RELOCATE THE TRIDENT LOGO 24" CLOSER TO THE OPEN CURTAIN STORAGE LOCATION. CENTER THE LOGO BETWEEN THE COURTS. THE APPROXIMATE LOCATION OF THE ORIGINAL TRIDENT LOGOS HAVE BEEN SHOWN GRADED OUT FOR REFERENCE ONLY.
8. PRESERVE EXISTING THRESHOLD AND CLEAN THEM OF ANY PREVIOUS SURFACE COATINGS. PREPARE FLOOR SURFACE AT THE MASONRY OPENINGS UP TO THE THRESHOLDS ACCORDING TO THE MANUFACTURER'S RECOMMENDATIONS. NEW COATING SHALL BE APPLIED TO A CLEAN EDGE AGAINST THE THRESHOLD AND DOOR FRAME FOR THE FULL WIDTH OF THE MASONRY OPENING.
9. EXTEND OF THE AREA TO BE RESURFACED SHALL BE DETERMINED ALONG THIS LINE BY THE EXISTING METAL TRACK THAT RECEIVED THE RUBBER REDUCER STRIP. SEE DETAIL 5 ON THIS SHEET.



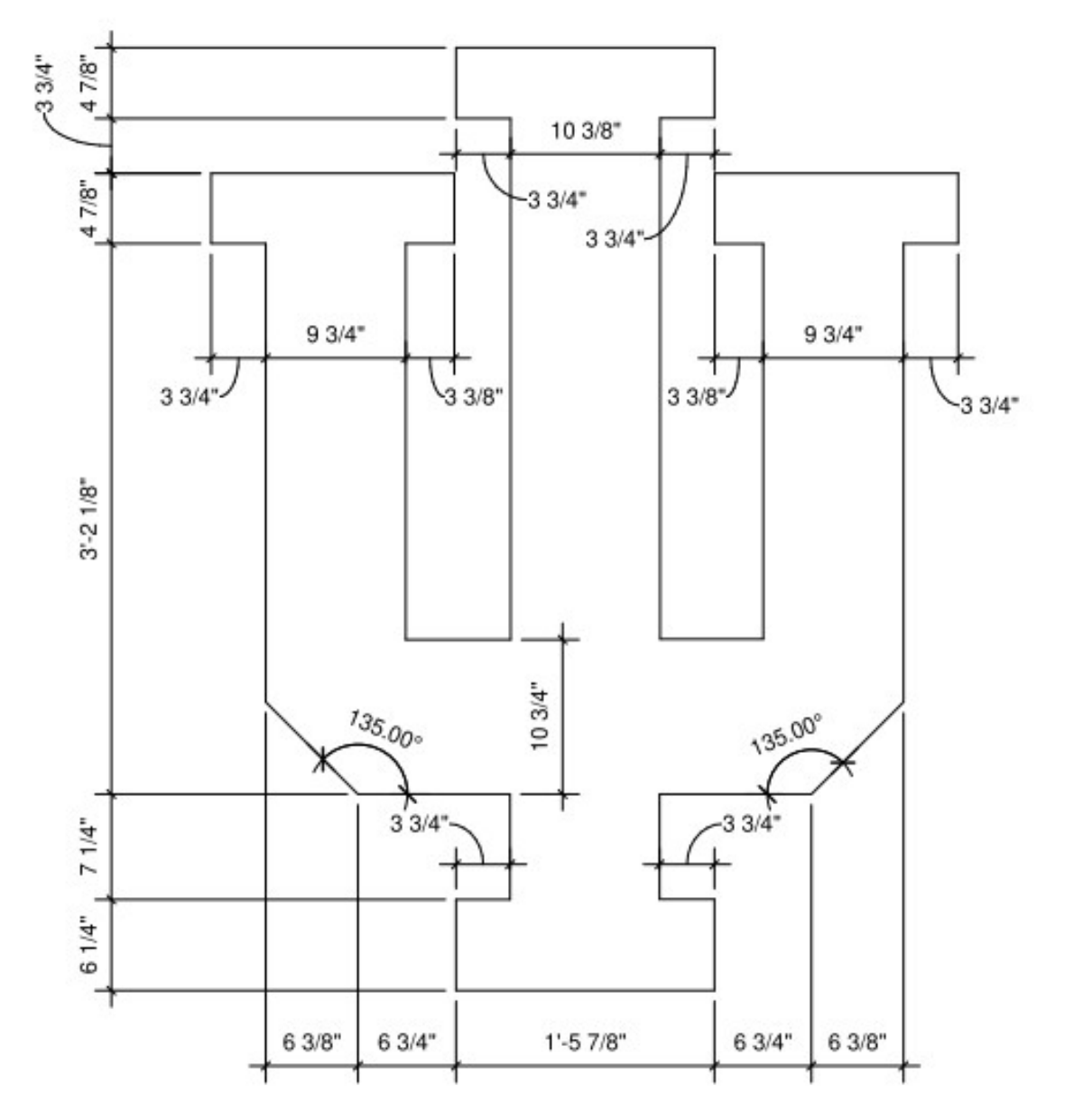
2 TYPICAL TENNIS COURT PLAN
SCALE: 1/8" = 1'-0"



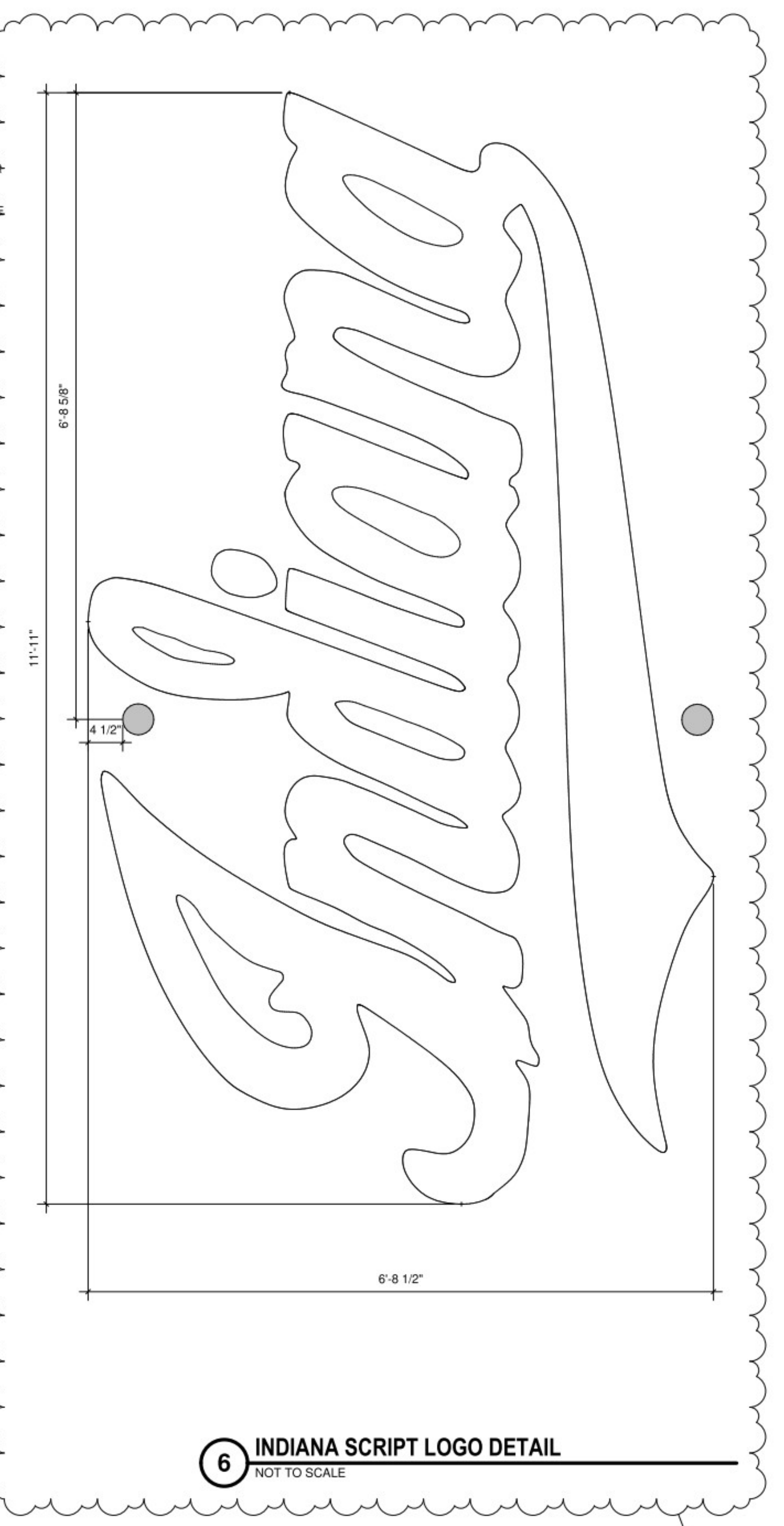
3 TENNIS COURT / JUNIOR COURT & PICKLEBALL COURT PLAN
SCALE: 1/8" = 1'-0"



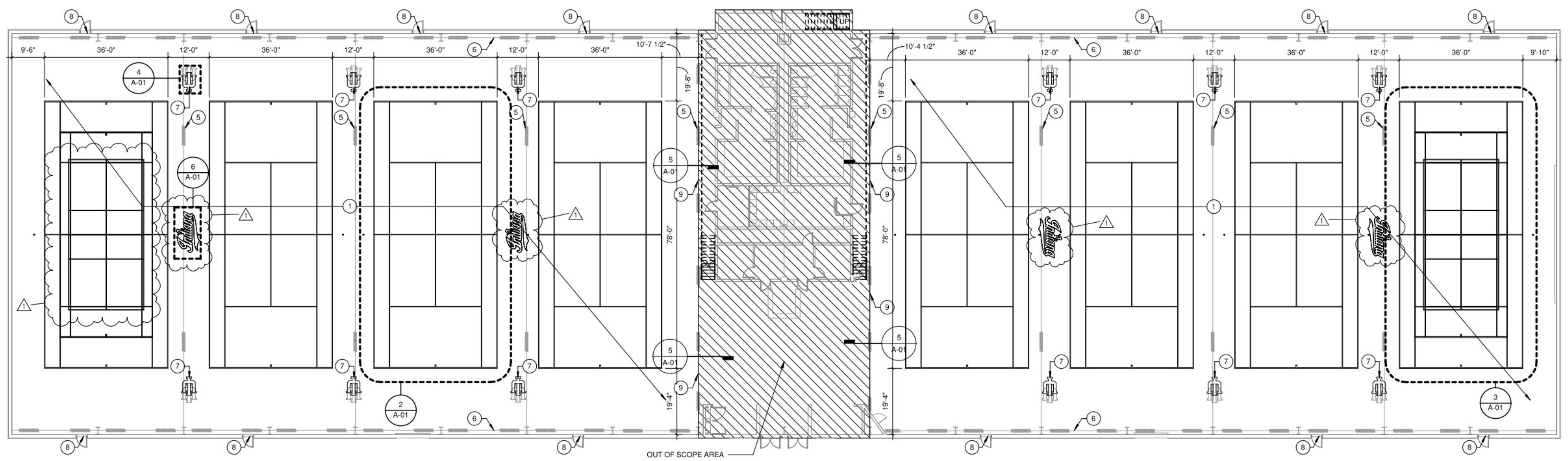
5 FLOORING TRANSITION DETAIL
SCALE: 3" = 1'-0"



4 IU TRIDENT LOGO
SCALE: 1" = 1'-0"



6 INDIANA SCRIPT LOGO DETAIL
NOT TO SCALE



1 FIRST FLOOR ARCHITECTURAL PLAN
SCALE: 1/16" = 1'-0"

COLOR SCHEDULE
COURT SURFACE COLOR: BRICK RED.
OUT-OF-BOUNDS / CIRCULATION SURFACE COLOR: DARK GRAY
COURT LINES / LOGOS: BRIGHT WHITE



BID DOCUMENT SET



DRAWN BY: Author
PROJECT NUMBER: 224144.00
PROJECT ISSUE DATE: 02.17.2025

REV. NO.	DESCRIPTION	DATE
1	ADDENDUM 1	03/04/2025

VERIFICATION NOTE
CONTRACTOR SHALL VERIFY ALL DIMENSIONS AND CLEARANCES AND ALL EXISTING FIELD CONDITIONS BEFORE STARTING CONSTRUCTION. COMMENCEMENT OF WORK CONSTITUTES ACCEPTANCE OF CONDITIONS.
SHOULD DIFFERENT CONDITIONS BE ENCOUNTERED, CONTACT THE ARCHITECT BEFORE PROCEEDING WITH WORK.

FLOOR PLANS

A-01

IUB TENNIS CTR RESURF 7/25

[2024 0256]

NAME

COMPANY

PH#

Jose Lopez	Tennis Technology	
MATT SMETHURST	IU	812-479-9075
Derrick Gray	Leslie Coatings	317-435-2361
Brice Freeman	Leslie Coatings	317-730-1940
Adam Gholson	AG Sports Surfaces	765-586-5332
JEFF MOULDEN	IU CPF	812-320-0021
MIKE GRANLAND	IU CRS	812-325-3106