

## ADDENDUM NO. 2

RE: IU BL 000B Multi-Building/Site Hardscape Renovations

OWNER: Indiana University-Bloomington  
2901 E Discovery Parkway  
Bloomington Indiana, 47408

PROJECT IU: #20240602  
No.: ARCH: 24-51

DATE: March 21, 2025

ISSUED BY: Springpoint Architects, p.c.  
522 W 2<sup>nd</sup> Street  
Bloomington, Indiana 47403

TO: Bidders

This Addendum modifies the Bidding Documents dated March 4, 2025 and will become part of the Contract Documents. Acknowledge receipt of this Addendum on Bid Form. Failure to do so may subject the Bidder to disqualification.

### GENERAL CLARIFICATIONS:

1. Bids are due **March 25, 2025 by 2pm**. Quotes shall be submitted **online** via IU Plan room. See submittal procedure in Project Manual.
2. Contractor question verifying start and substantial completion dates. The staggered dates should help with scheduling subs and cut down on fencing amounts as it can be planned around two sites at a time. To clarify:
  - a. Biology/Ballantine: mid-May-August 15
  - b. Indiana Memorial Union: Flexible start-October 13
  - c. North David Baker Avenue: mid-May-August 15
  - d. Woodburn (Alternate): Flexible start-October 13
3. Contractor question regarding using snow fencing in lieu of chainlink for tree protection. To clarify, IU prefers the chainlink fencing around trees for protection. Reference details shown and specifications which are typical for IU.
4. Contractor question regarding finish of stainless-steel handrails. The S.S. handrail finish shall be no. 4 brushed.

### CHANGES TO BIDDING REQUIREMENTS:

None.

## **CHANGES TO SPECIFICATIONS:**

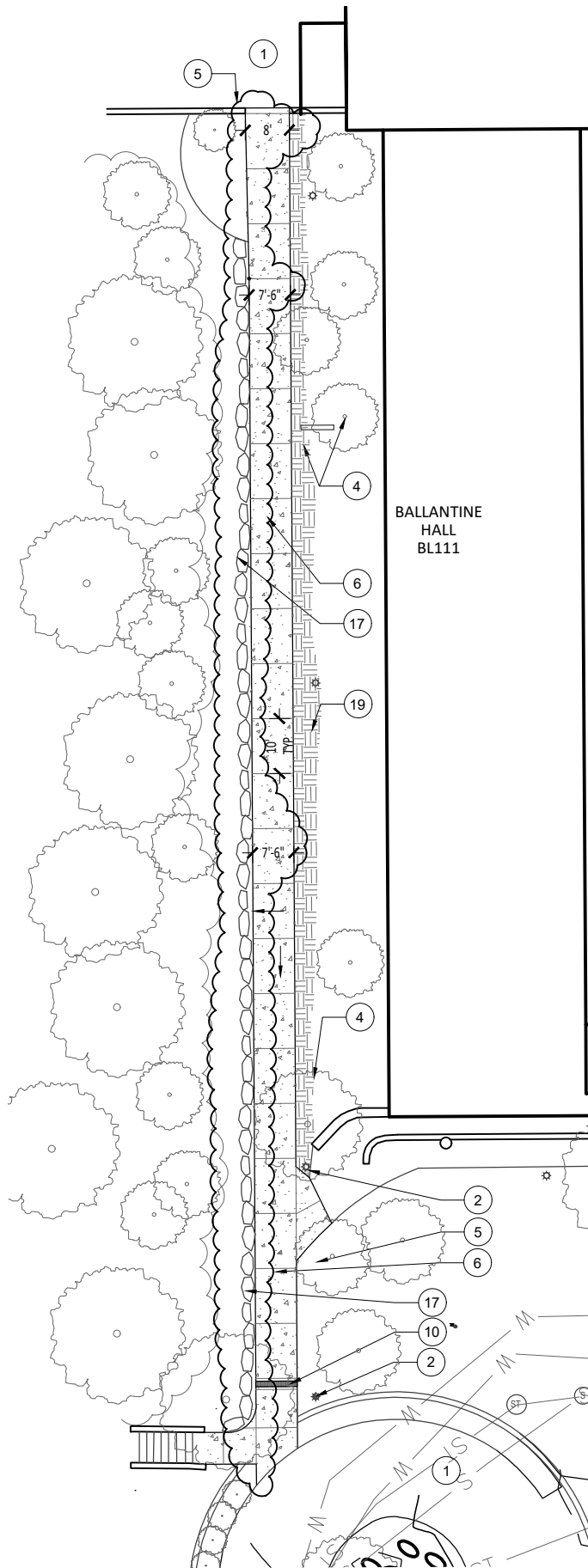
1. Section 321313 Concrete Paving, 1.4 Quality Assurance:
  - a. Add note D: Testing Agency Qualifications: An independent agency qualified according to ASTM C 1077 and ASTM E 329 for testing indicated, as documented according to ASTM E 548.
    - i. Personnel conducting field tests shall be qualified as ACI Concrete Field Testing Technician, Grade 1, according to ACI CP-01 or an equivalent certification program.
    - ii. Concrete Testing Service: Engage a qualified independent testing agency to perform material evaluation tests and to design concrete mixtures.

## **CHANGES TO DRAWINGS:**

1. Sheet L101, Demolition Note 16: shall read "Existing stone to remain and be protected throughout. Remove concrete walk around stone as needed" in lieu of "Remove, salvage, and reinstall stone at embankment as needed to allow for new concrete."
2. Sheet L102,
  - a. Plan B: Ballantine Site and Grading Plan:
    - i. Where walk begins to abut stone embankment, shift west edge of walk to 7'-6". Provide continuous formed walk line along west edge, mulch voids as needed, typ. Ref attachment ADD 2.1.
  - b. Site Plan Note 10:
    - i. In all trench drain locations, trench drain width shall be 12"W in lieu of 8"W.
    - ii. Ballantine Trench drain shall be 7'-6"L in lieu of 8'L.
  - c. Site Plan Note 17: shall read "Existing stone to remain throughout embankment, typ." in lieu of "Reinstall salvaged stone, dry stack, throughout embankment as needed, typ."
  - d. Regarding Site Plan Note 7: Add stone repair table and photos. Ref attachment ADD 2.2.
3. Sheet L302
  - a. Regarding Site Plan Note 24: Add Stone repair table and photos. Ref attachment ADD 2.3
4. Sheet L 304
  - a. Sections C-F:
    - i. Outside of culvert limits, provide 10" block with 4" stone veneer in lieu of 8" block and 6" veneer. Wall over culvert shall remain 8" block with 4" veneer.
    - ii. Limestone veneer finish shall be chatsawn to match the building.
5. Sheet L305, Detail B Steel Bollard: ref ADD 2.4 for full detail.

## **LIST OF ATTACHMENTS:**

1. ADD 2.1 – ADD 2.4



BALLANTINE  
HALL  
BL111

**B** BALLANTINE  
**SITE AND GRADING PLAN**

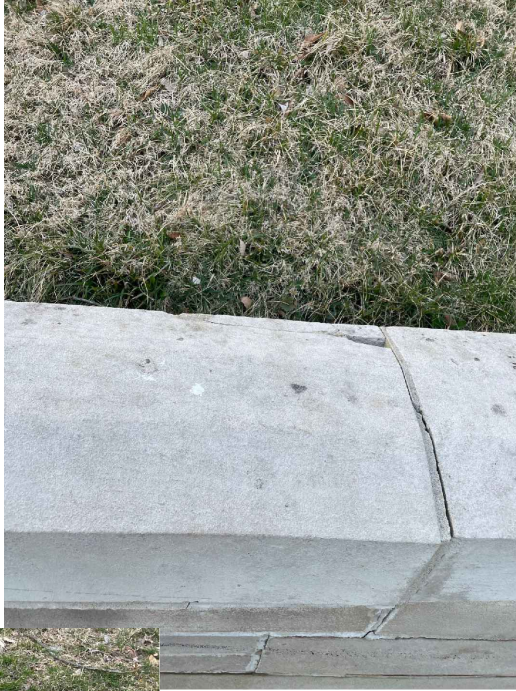
SCALE: SCALE: 1"=30'-0"



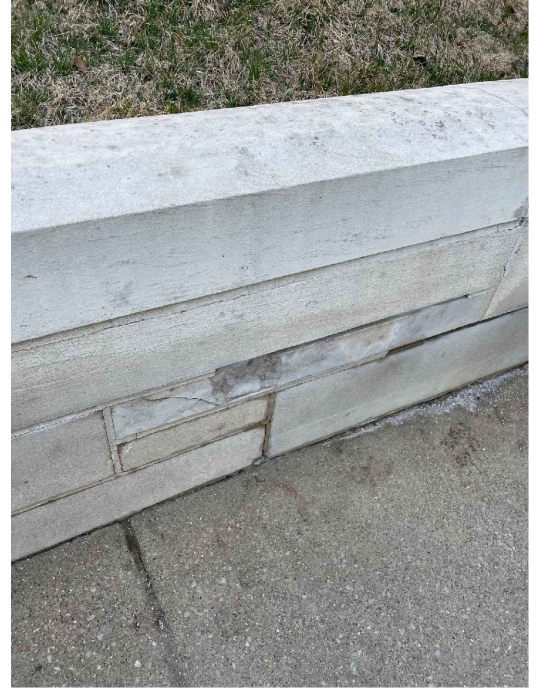
I.U. BL 000B - MULTI-SITE  
HARDSCAPE RENOVATIONS  
BLOOMINGTON, INDIANA

**ADD. 2.1**

03.21.25



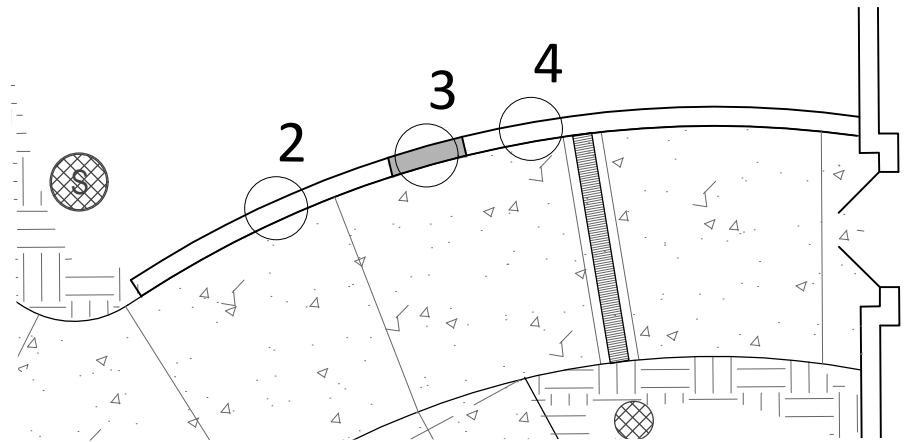
3



4



2



BIOLOGY: STONE REPAIR

**C** PLAN

SCALE: 1"=10'-0"

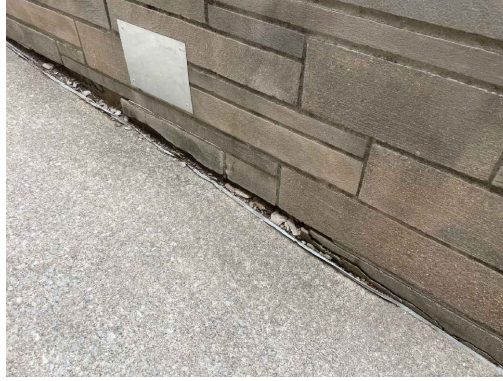


## STONE REPAIR TABLE

KEY	NOTES
1	GENERAL-ENTIRE SITE WALL: CLEAN STONE, TUCKPOINT JOINTS AND FILL CRACKS WITH MORTAR TO MATCH EX, NEW CAULK AT ALL CAP JOINTS AND FINISH SURFACE JOINTS.
2	REMOVE AND RESET CAPS AS NEEDED.
3	REPLACE BROKEN STONE CAP. NEW CAP SHALL MATCH EXISTING IN SHAPE, SIZE, COLOR, AND FINISH, TYP.
4	-REMOVE AND REPLACE REMAINING DAMAGED STONE AND MORTAR. STONE, MORTAR, AND JOINT SIZES, COLOR, TYPE SHALL MATCH EXISTING.



5



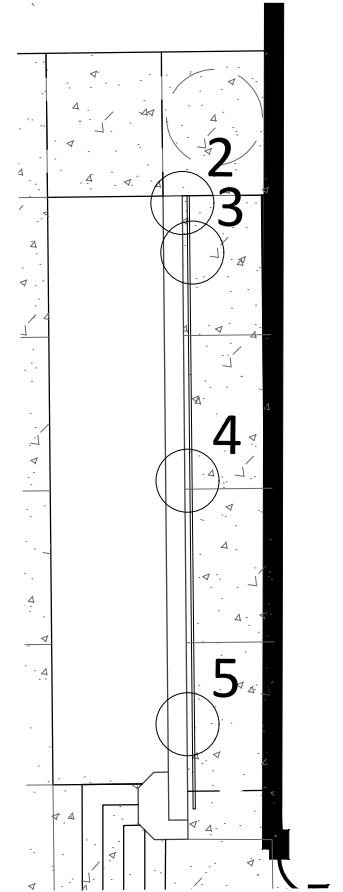
4



3



2



IMU: STONE REPAIR AT ERNIE PYLE

C

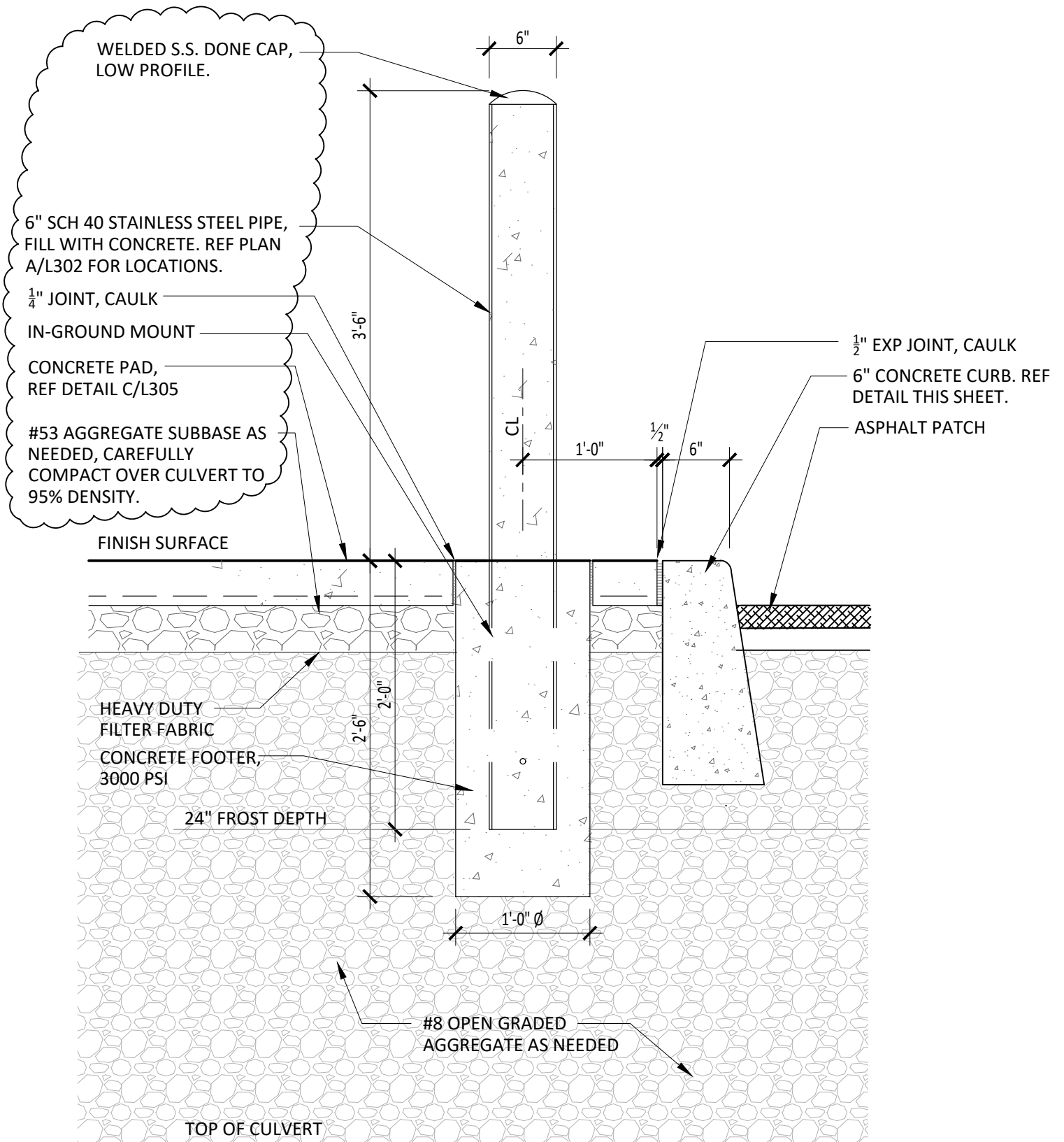
PLAN

SCALE: 1"=10'-0"



## STONE REPAIR TABLE

KEY	NOTES
1	GENERAL-ENTIRE SITE WALL: CLEAN STONE, TUCKPOINT JOINTS AND FILL CRACKS WITH MORTAR TO MATCH EX, NEW CAULK AT ALL CAP JOINTS AND FINISH SURFACE JOINTS.
2	RESET END STONE, REPLACE DAMAGED STONE, MORTAR JOINTS
3	REPLACE DAMAGED STONE, MORTAR JOINTS. REMOVE PLATE AND MORTAR HARDWARE HOLES FOR SMOOTH FINISH.
4	FILL VOIDS WITH NEW STONE AND REPLACE DAMAGED STONE, MORTAR JOINTS. REMOVE PLATE AND MORTAR HARDWARE HOLES FOR SMOOTH FINISH.
5	FILL VOID WITH NEW STONE, MORTAR JOINTS. REMOVE PLATE AND MORTAR HARDWARE HOLES FOR SMOOTH FINISH



STEEL BOLLARD

# B DETAIL

SCALE: 1"=1'-0"