

ADDENDUM



SECTION 00 91 11.01 - ADDENDUM 001

OWNER

INDIANA UNIVERSITY

PROJECT

**20240225 BL107 BIOLOGY BUILDING - 1ST
FLOOR LABS RENOVATION**

A/E PROJECT 5-6521

PURPOSE

**THIS ADDENDUM SHALL FORM PART OF THE
BIDDING DOCUMENTS. CHANGES, ADDITIONS,
CLARIFICATION OR DELETIONS HEREIN
SUPERSEDE THE DRAWINGS AND
SPECIFICATIONS. BIDDERS SHALL INCLUDE
ON THE PROPOSAL FORM
ACKNOWLEDGEMENT OF THE RECEIPT OF
THIS ADDENDUM.**

ATTACHMENTS

**GENERAL: PRE-BID MEETING AGENDA, PRE-
BID SIGN-IN SHEET
REISSUED SHEETS:M9.01**

ARCHITECT-ENGINEER

**GMB
317.641.0674
WWW.GMB.COM**

ADDENDUM



SHEET CLARIFICATIONS / REVISIONS

1.1 SHEET M9.01 - MECHANICAL DETAILS AND SCHEDULES (REISSUED)

- A. See Diffusers and Grilles Schedule: Schedule note clarification impacting supply diffusers.

GENERAL

1.1 PRE-BID MEETING AGENDA (NEW)

1.2 PRE-BID SIGN-IN SHEET (NEW)

END OF SECTION

VAV TERMINAL UNIT SCHEDULE																
MARK	SERVICE	MANUFACTURER	MODEL	INLET SIZE (IN)	HEATING COIL											
					CFM	ROWS	MBH	EAT (°F)	LAT (°F)	EWV (°F)	LWT (°F)	GPM	MAX APO (ft-wg)	MAX WFO (ft)	MAX DISCHARGE NC	NOTES
VAV-101A	SUPPORT 101A LABORATORY	TITUS	DESV	8	150	1	6.3	55	93.5	180	167	1	0.02	0.43	25	1
VAV-101B	LABORATORY 101	TITUS	DESV	9	500	2	26.7	55	104.2	180	153	2	0.10	0.27	20	
VAV-101C	LABORATORY 101	TITUS	DESV	9	500	2	26.7	55	104.2	180	153	2	0.10	0.27	20	
VAV-109A	LABORATORY 109	TITUS	DESV	9	590	2	28.8	55	100	180	150	2	0.12	0.27	23	
VAV-109B	LABORATORY 109	TITUS	DESV	9	510	2	20.9	55	103.7	180	152	2	0.10	0.27	20	

- GENERAL NOTES:**
- IU CONTROLS GROUP TO PROVIDE AND INSTALL THE CONTROLS COMPONENTS (SENSORS, CONTROLLERS).
 - IU CONTROLS TO PROVIDE VAV TERMINAL BOXES AND REHEAT COIL 2-WAY CONTROL VALVES. MECHANICAL CONTRACTOR TO INSTALL.
 - STERLOC FOIL FACED DUCT BOARD LINER.
 - CONTRACTOR SHALL VERIFY COIL CONNECTION AND CONTROLS CONNECTION SIDE PRIOR TO ORDERING.
- SCHEDULE NOTES:**
- CONTROL WITH 3-WAY VALVE.

EXHAUST VALVE SCHEDULE									
MARK	MANUFACTURER	MODEL	SIZE	SERVICE	AIRFLOW (CFM)		NOTES		
					MAX	MIN			
GEV-101A	PRICE INDUSTRIES	RDV Series	4	SUPPORT 101A	100	100			
GEV-101B	PRICE INDUSTRIES	RDV Series	8	LAB 101	450	320			
GEV-101C	PRICE INDUSTRIES	RDV Series	8	LAB 101	450	315			
GEV-109A	PRICE INDUSTRIES	RDV Series	8	LAB 109	475	345			
GEV-109B	PRICE INDUSTRIES	RDV Series	8	LAB 109	475	340			

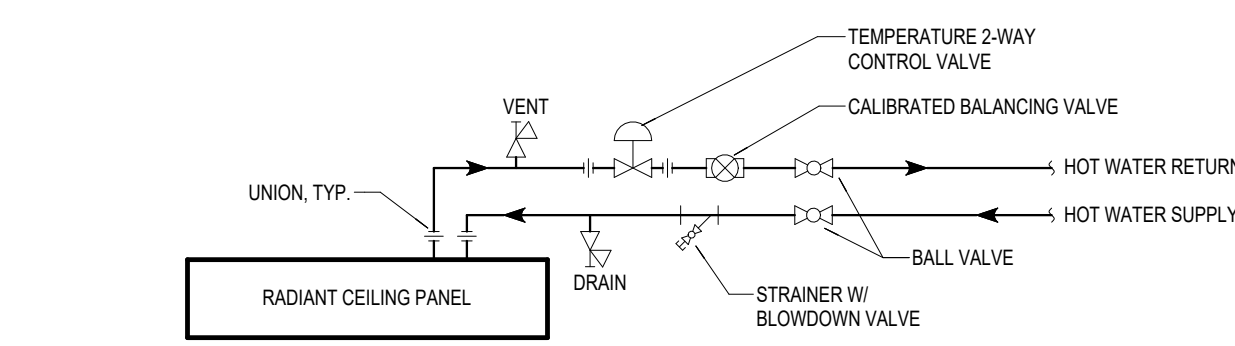
- GENERAL NOTES:**
- IU CONTROLS GROUP TO PROVIDE AND INSTALL THE CONTROLS COMPONENTS (SENSORS, CONTROLLERS).
 - IU CONTROLS GROUP TO PROVIDE EXHAUST VALVES. MECHANICAL CONTRACTOR TO INSTALL.

DIFFUSERS AND GRILLES SCHEDULE									
MARK	MANUFACTURER	MODEL	DESCRIPTION	MODULE SIZE	BORDER TYPE	MATERIAL	NECK SIZE	NOTES	
E-1	PRICE	APDOR	ARCHITECTURAL PERFORATED DIFFUSER	24 x 12	Lay-in	STEEL W/ ALUMINUM FACE	18"x6"		
E-2	PRICE	APDOR	ARCHITECTURAL PERFORATED DIFFUSER	24 x 24	Lay-in	STEEL W/ ALUMINUM FACE	14"x14"		
S-1	PRICE	APDN	PERFORATED FACE SUPPLY DIFFUSER	24 x 24	Lay-in	STEEL W/ ALUMINUM FACE	18"x6"		
S-2	PRICE	APDN	PERFORATED FACE SUPPLY DIFFUSER	24 x 24	Lay-in	STEEL W/ ALUMINUM FACE	18"x6"	1	
S-3	PRICE	APDN	PERFORATED FACE SUPPLY DIFFUSER	24 x 24	Lay-in	STEEL W/ ALUMINUM FACE	18"x6"	1	

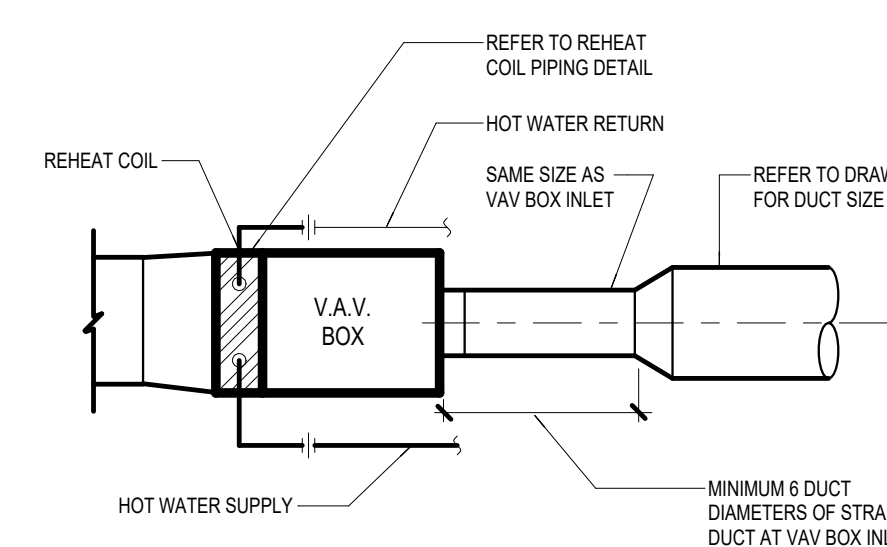
- GENERAL NOTES:**
- FINISH TO BE B12 - STANDARD WHITE.
 - CONTRACTOR TO COORDINATE ALL BORDERS, CHANNELS, TRIMMING, ETC. WITH CEILING TYPE.
- SCHEDULE NOTES:**
- DEFLECTORS IN NECK.

RADIANT PANEL SCHEDULE												
MARK	MANUFACTURER	MODEL	FINISH	FLUID TYPE	GPM	BTU/HLF	SIZE (IN x IN)	TOTAL BTUH	AWT (°F)	NO. PASSES (ft-wg)	WPD (ft-wg)	NOTES
RP-1	AIRTEX	HEF-2	EXTRUDED	WATER	0.50	212	48x12	868	170 °F	2	91	

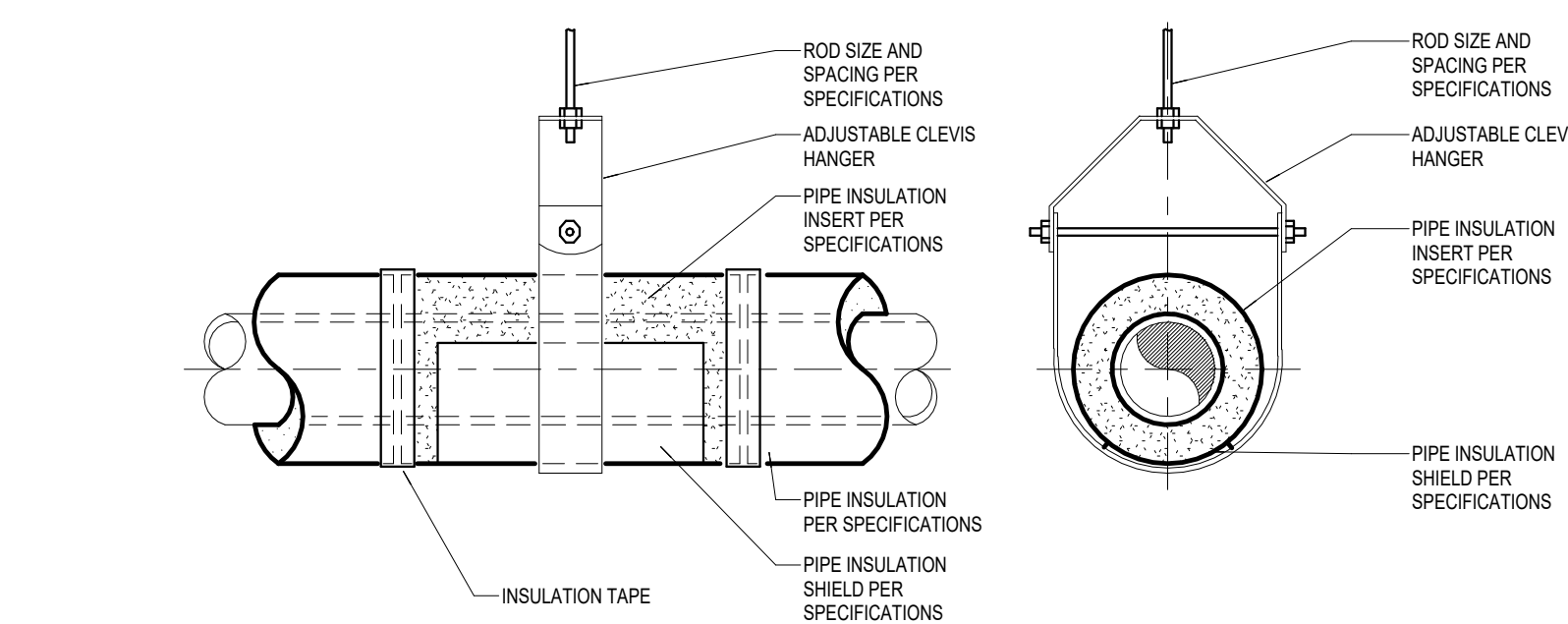
- GENERAL NOTES:**
- IU CONTROLS GROUP TO PROVIDE CONTROL VALVES. MECHANICAL CONTRACTOR TO INSTALL.
 - RADIANT PANEL CONTROL VALVE TO BE CONTROLLED BY VAV TERMINAL UNIT ROOM THERMOSTAT SENSOR.
 - PANEL PIPING CONNECTION SHOULD BE LEFT AND RIGHT SIDE. REFER TO M3.01 FOR LOCATION.
 - PANEL MALE EDGE SHALL BE INSTALLED TOWARD EXTERIOR WALL TO HIDE SPLICE LINES BETWEEN EXTRUSIONS FROM VIEW.
 - RADIANT PANELS RP-1 TOTAL QTY 9.



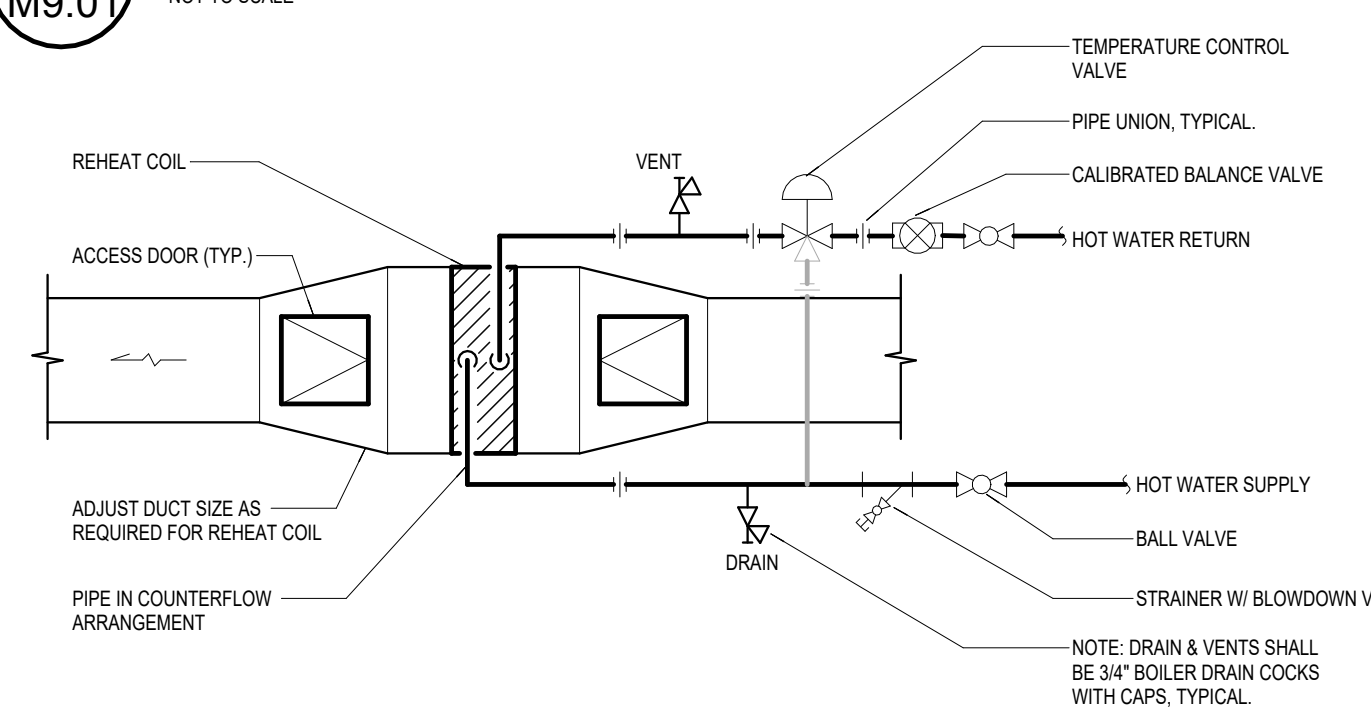
6
M9.01 RADIANT CEILING PANEL PIPING DIAGRAM
NOT TO SCALE



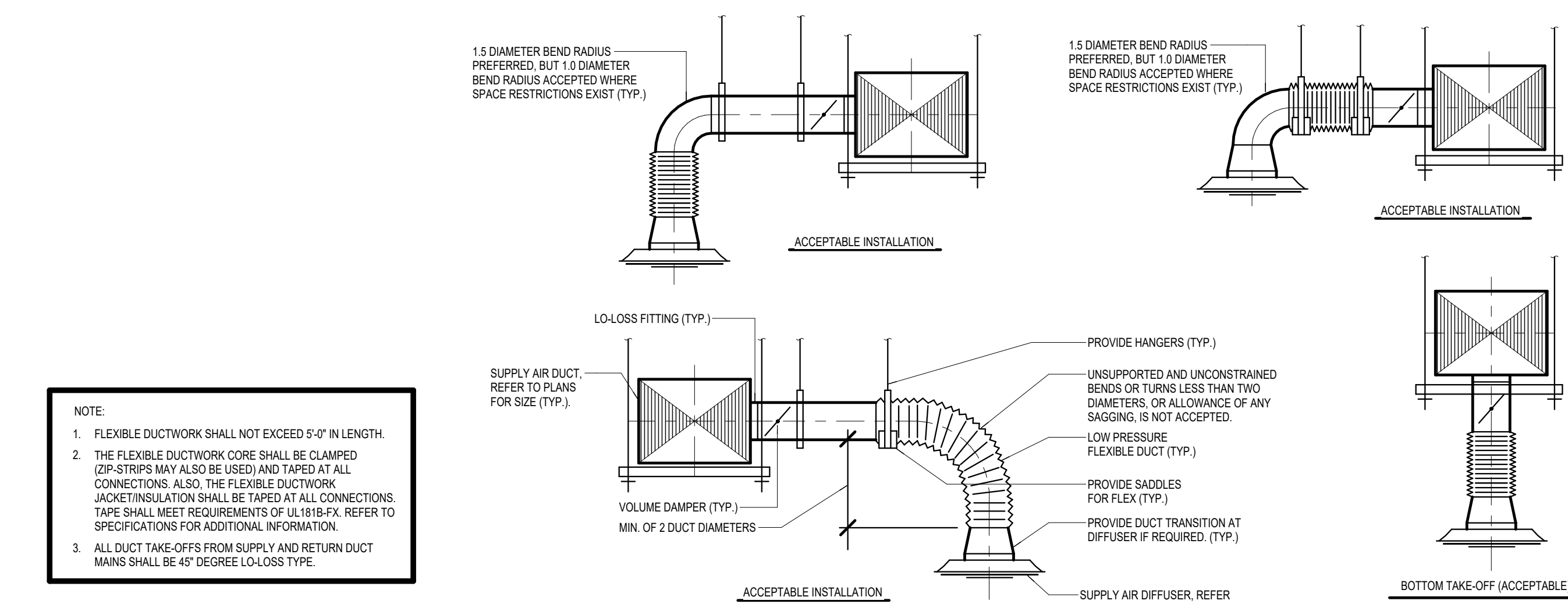
3
M9.01 VAV BOX W/ REHEAT COIL DETAIL
NOT TO SCALE



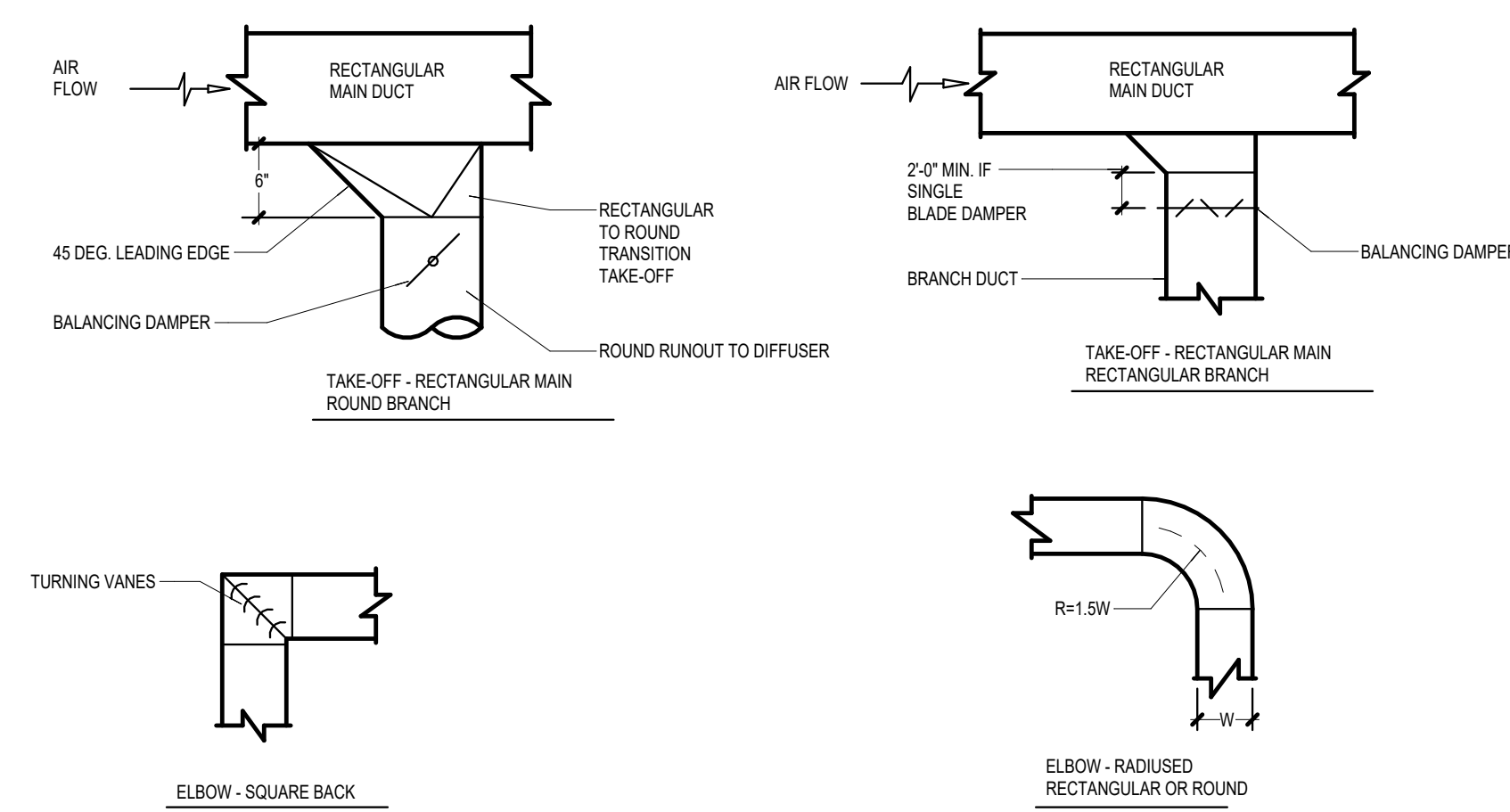
5
M9.01 CLEVIS HANGER DETAIL
NOT TO SCALE



2
M9.01 REHEAT COIL PIPING 2(3)-WAY DETAIL
NOT TO SCALE



4
M9.01 CEILING DIFFUSER FLEX CONNECTION
NOT TO SCALE



1
M9.01 LOW PRESSURE DUCT FITTINGS
NOT TO SCALE

- NOTE:**
- FLEXIBLE DUCTWORK SHALL NOT EXCEED 5'-0" IN LENGTH.
 - THE FLEXIBLE DUCTWORK CORE SHALL BE CLAMPED (ZIP STRIPS MAY ALSO BE USED) AND TAPED AT ALL CONNECTIONS. ALSO, THE FLEXIBLE DUCTWORK JACKET/INSULATION SHALL BE TAPED AT ALL CONNECTIONS. TAPE SHALL MEET REQUIREMENTS OF UL181B/P. REFER TO SPECIFICATIONS FOR ADDITIONAL INFORMATION.
 - ALL DUCT TAKE-OFFS FROM SUPPLY AND RETURN DUCT MAINS SHALL BE 45 DEGREE LO-LOSS TYPE.

PRE-BID MEETING AGENDA



Indiana University

Date/Time: March 25, 2025 at 1:00pm

Project Name: 20240225 - BL107 Biology Bldg - 1st Floor Labs Renovation

GMB Project Number: 5-6521

A. Introductions

1. Sign-in
2. Owner
3. A/E

B. Bidding Documents

Bidding Documents are available. Please contact Eastern Engineering Distribution Department, 9901 Allisonville Road, Fishers, Indiana 46038, Ph. 317-598-0661, www.iuplanroom.com for deposit and purchase information.

C. Bid Date

Bids will be received until 2:00 P.M. (local time) on April 17, 2025.

Via electronic bid submission on www.iuplanroom.com. Bidders must be registered on the plan room, and signed in to the plan room, in order to submit a bid.

D. Schedule

There are two phases for this project. Each phase has one laboratory and one support room. The Contractor is to allow for four (4) weeks from the completion of Phase 1 to the start of Phase 2. This will allow time for occupants to vacate the Phase 2 project limits.

Contractor to share on the bid form the number of calendar days to complete the whole project. Remember, it starts with Notice to Proceed, includes Phase 1, four (4) weeks for occupant move, and Phase 2.

E. Project Access

There will be multiple ongoing construction projects occurring at the same time. Review contractor access plans for location of dumpster.

F. Project Scope

Renovation of Rooms 101, 101A, 109 and 109A to include (but not limited to):

1. New research laboratory and support spaces. Including all new lab configuration, casework, finishes, mechanical, electrical and plumbing to support new lab spaces.
2. Salvage fume hoods for reinstallation.

G. Questions and Substitutions

All questions and requests must be received in writing. Email GMB Architecture + Engineering (sarahb@gmb.com) by Friday, April 11, 2025, to be included in Addendum.

H. Additional Site Visits

Contact Matt Harms (harmism@iu.edu) to schedule additional visits.



20240225 - BL107 Biology Bldg - 1st Floor Labs Renovation

PREBID MEETING - MARCH 25, 2025

NAME	COMPANY	TELEPHONE	EMAIL
Sarah Bajer	GMB	317.641.0674	sarahb@gmb.com
Corey Juske	Verkler inc		cjuske@verkler.com
Aaron Root	Abel		arout@abelconstruction.com
Chris Kelley	Electric Plus	812-325-3048	ckelley@electricplus.com
Reid Sillis	Weddle Bros	812-320-7283	rsillis@weddlebros.com
Courtney Conroy Taylor McLamb	IUSM	317-278-9624	cohond@iu.edu
	IUSM	517-278-2322	tmcbug@iu.edu
JOSH LEITING	IU CPF	614-769-5577	jleiting@iu.edu
MATT HARMS	IU CPF	812 856 4110	HARMSM@IU.EDU
Somsri Bond	IU CPF	812-856-6746	
Brod Woolen	TERSTEP	(317) 510-7384	BRODWD@TERSTEP.COM
Garrett Hickman	HFI	(812) 360-2962	ghickman@handlfish.com