

## ADDENDUM NO. 2

---

To: Construction Documents dated April 21, 2025

Project: BL299 Willkie C – Add Willkie Building to the Campus Chilled Water Loop  
IU 20230167

BRCJ Project No.: 11751

Date: May 9, 2025

---

This Addendum, issued prior to bidding alters, amends, corrects, or clarifies the Proposal Documents to the extent stated herein and does thereby become a part of the Proposal Documents and will become part of the Contract Documents of the successful bidder.

---

### ITEMS INCLUDED IN THIS ADDENDUM

#### **ANSWERS TO QUESTIONS**

*Q1: The majority of this project shows the construction fence roughly 10 - 12 ft wide. With the minimum width of the trench and OSHA standards requiring another 2' away from the ditch line (leading edge) for laborers to work away from the ditch line on both sides - Not to mention rock excavation – can more width be provided? Utility contractors typically have a minimum of 20'.*

*A1: The temporary site protection fencing has been widened to wherever possible, considering the site constraints. Refer to attached - revised sheet C201 Selective Site Demolition, Restoration, & Erosion Control Plan.*

*Note that the design team has done our best to accommodate the contractor's needs for access, excavation, stockpiling, laydown, storage, etc., but we cannot anticipate every need that may arise during construction, and we will be flexible with the arrangement of temporary fencing, etc... understanding that everything must be restored by the substantial completion date*

*Q2: If the contractor has to cut and excavate additional concrete walk paths beyond the limits of what is currently shown on the plans, are they going to be entitled to a PCO?*

*A2: The limits of concrete and asphalt removal and replacement have been revised to be more realistic, but should not be interpreted as the exact limits of demolition and restoration. Refer to sheet C201 Selective Site Demolition, Restoration, & Erosion Control Plan, General Note D, regarding the limits of demolition and replacement.*

*The contractor's bid should include the removal and replacement of all surfaces as required to complete the project. Change order requests will not be entertained except in circumstances where the alignment of the chilled water lines needs to deviate significantly from the design due to unforeseen circumstances.*

#### **CHANGES TO PROJECT MANUAL**

None.

#### **CHANGES TO PROJECT PLANS**

Sheet C201 – Selective Site Demolition, Restoration, & Erosion Control Plan

- MODIFY temporary site protection fencing
- MODIFY hard surface remove/replacement limits

Sheet C402 – Site Details  
- ADD Light Base detail.

**ATTACHMENTS**

1. Revised Plan sheet C201.
2. Revised Detail sheet C402.

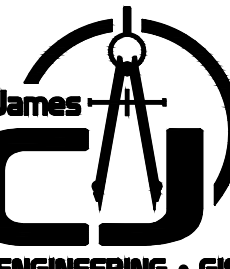
**END OF ADDENDUM TWO**





CALL 2 WORKING DAYS BEFORE YOU DIG  
**1-800-382-5544** CALL TOLL FREE  
 PER INDIANA STATE LAW ICB-1-26.  
 IT IS AGAINST THE LAW TO EXCAVATE  
 WITHOUT NOTIFYING THE UNDERGROUND  
 LOCATION SERVICE TWO (2) WORKING DAYS  
 BEFORE COMMENCING WORK.

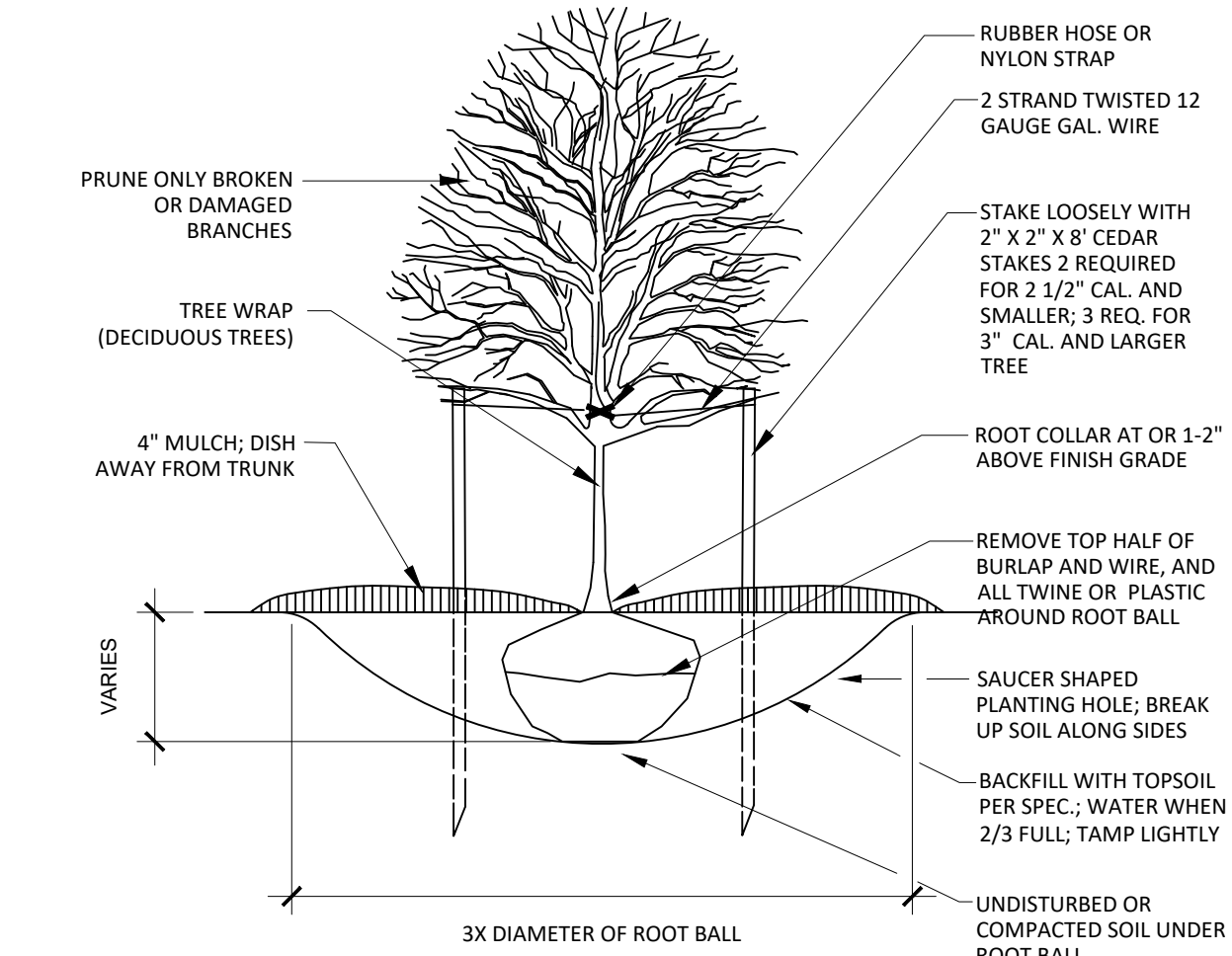
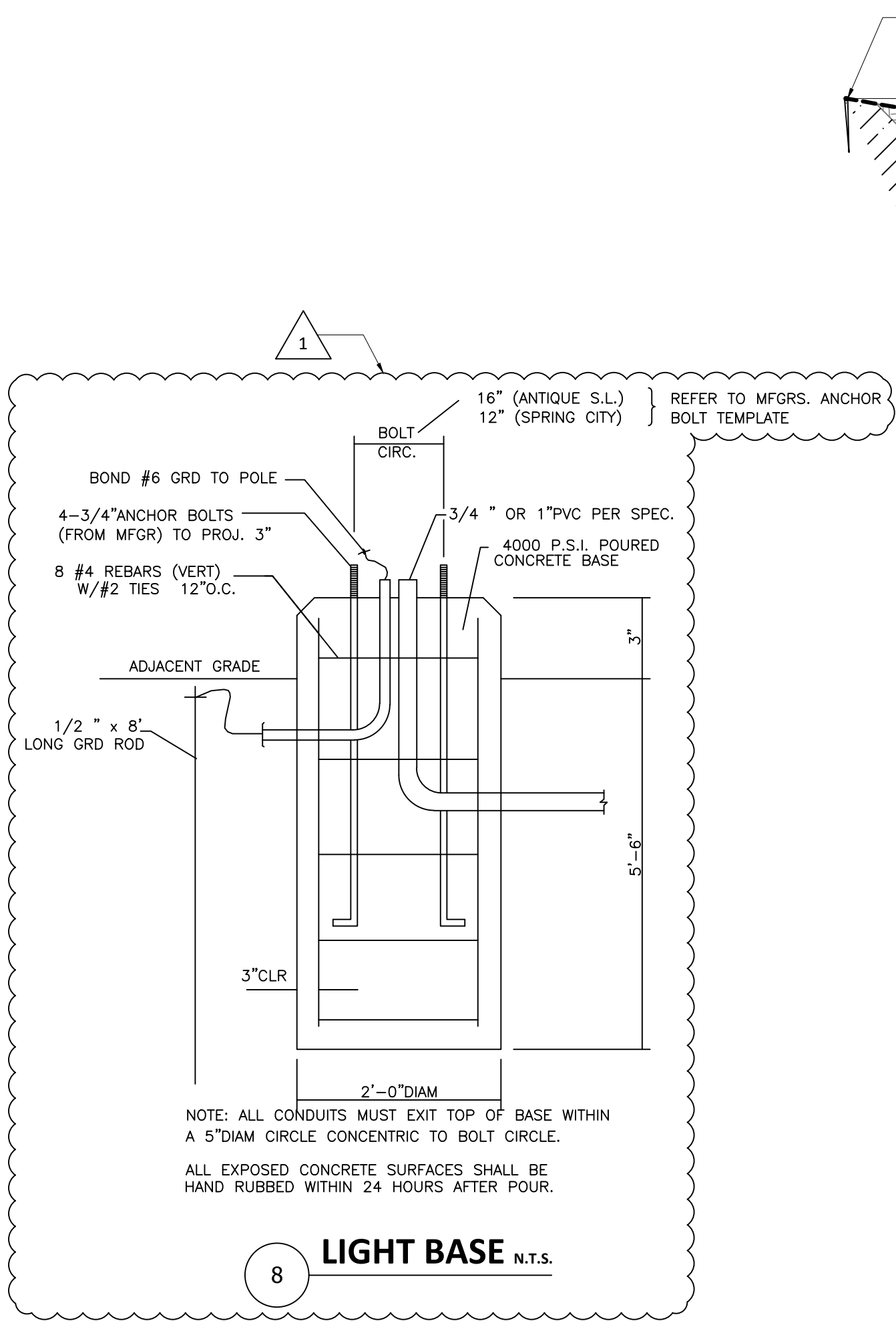
- |                                     |                                |
|-------------------------------------|--------------------------------|
| AT&T                                | IU UTILITIES                   |
| Russ Owen - (812) 334-4629          | Don Goodwin - (812) 856-1147   |
|                                     | Scott Osborn - (812) 856-2789  |
| DUKE ENERGY                         |                                |
| Rod Sanders - (812) 337-3046        | UIITS Telecom                  |
|                                     | Tom Wedemeyer - (812) 855-3285 |
| CITY OF BLOOMINGTON UTILITIES (CBU) |                                |
| Nancy Axson - (812) 349-3689        |                                |
| Troy Powell - (812) 349-3632        |                                |
| CENTERPOINT ENERGY                  |                                |
| Matt Raines - (812) 330-4009        |                                |
| INSIGHT COMMUNICATIONS              |                                |
| Steve McArthur - (812) 366-3090     |                                |



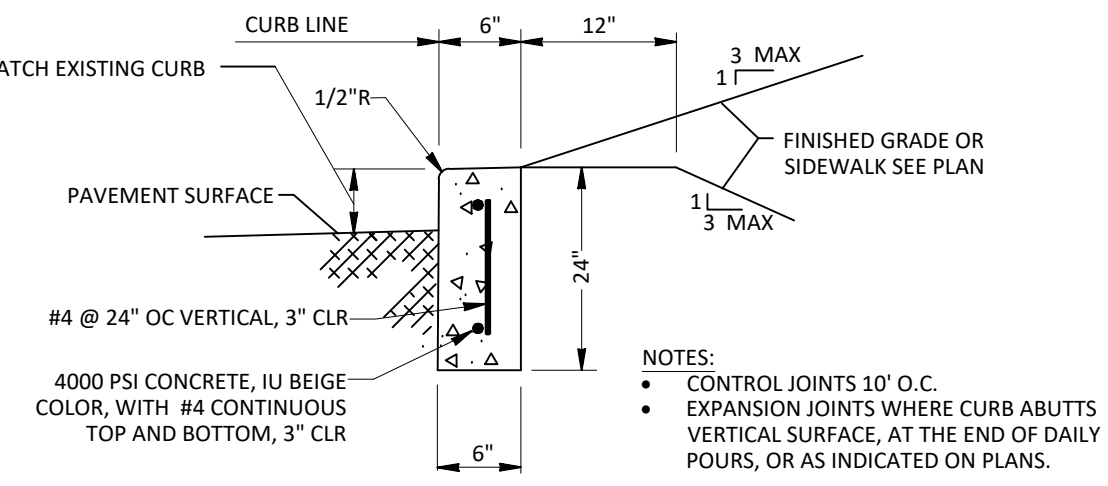
1

**C201**

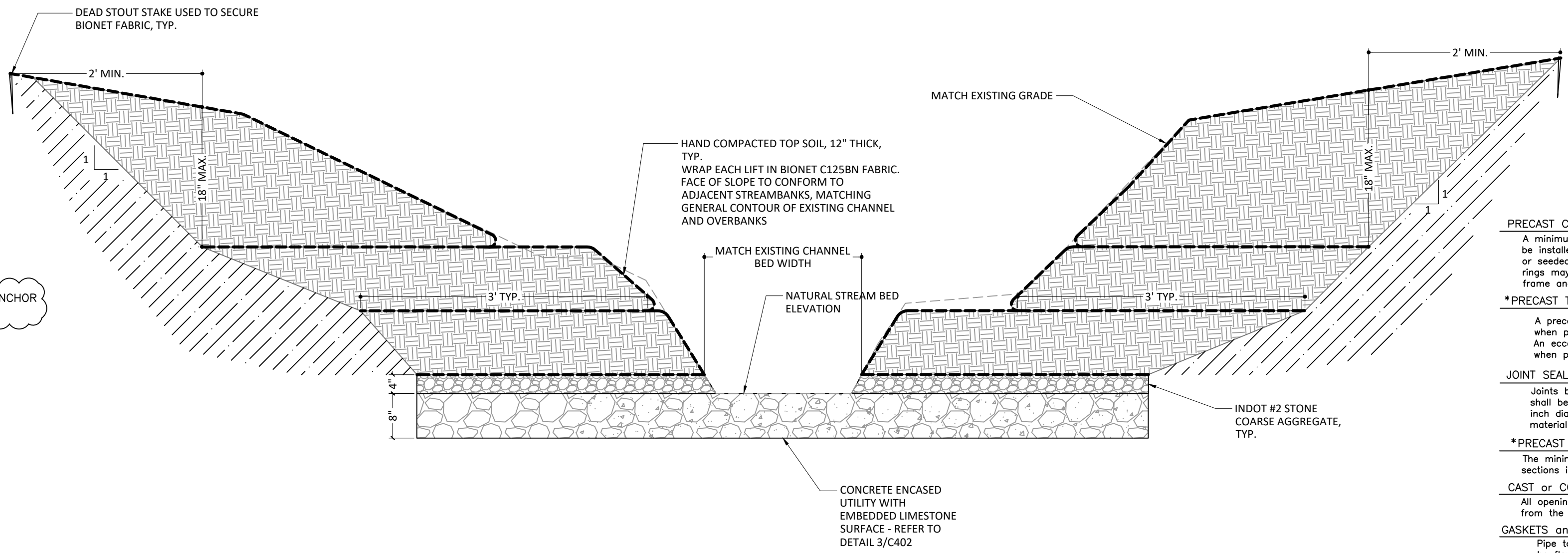




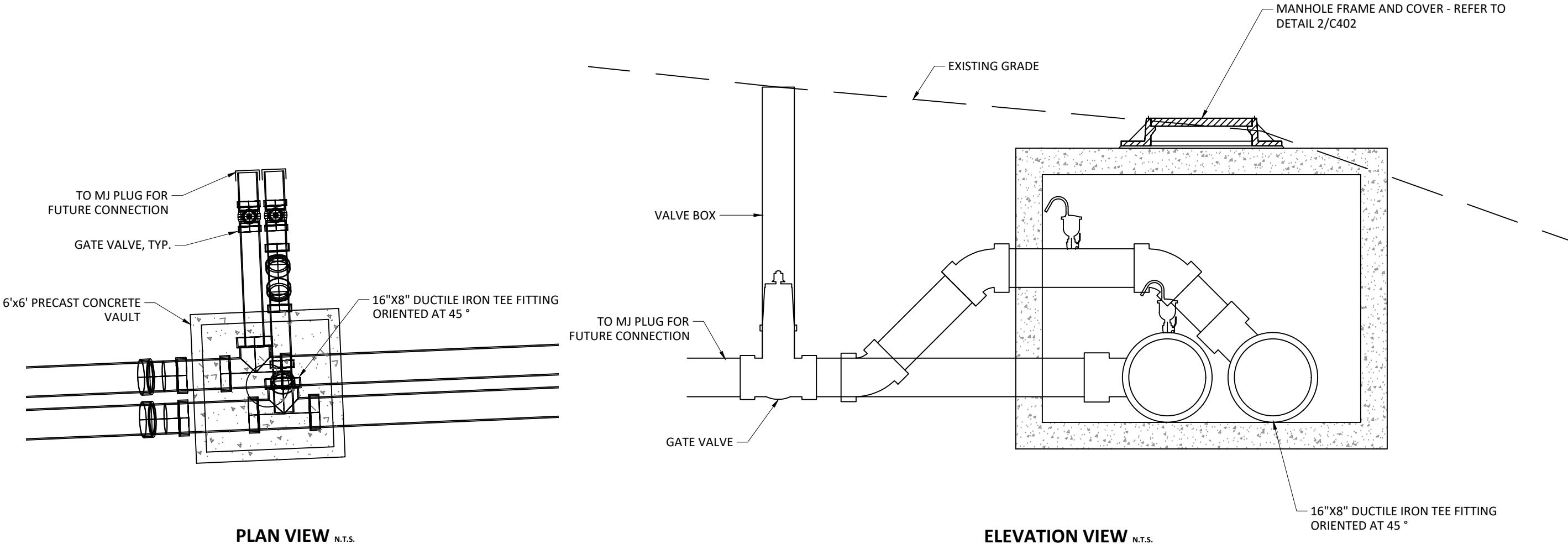
7 TREE PLANTING DETAIL N.T.S.



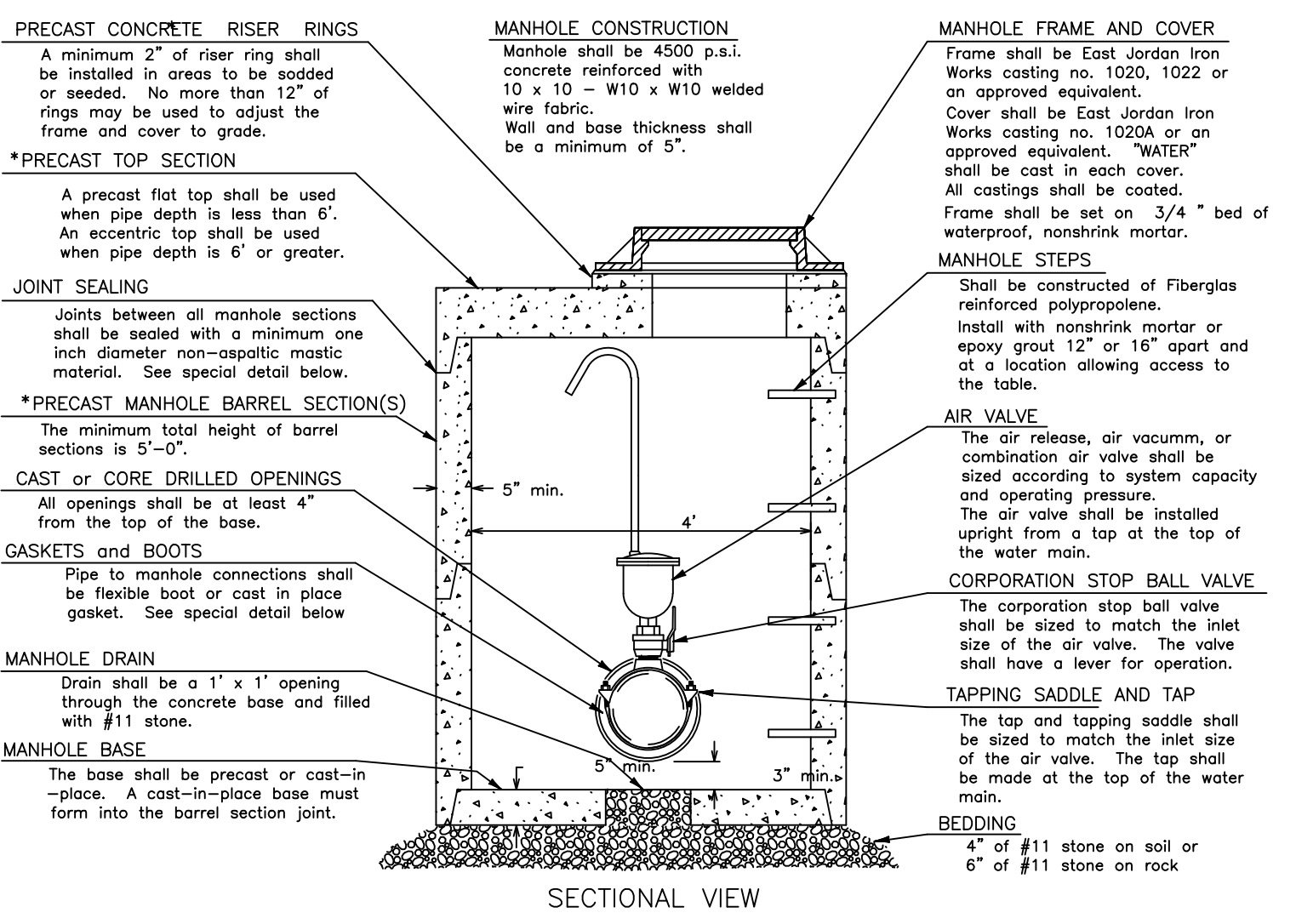
4 STANDING CONCRETE CURB N.T.S.



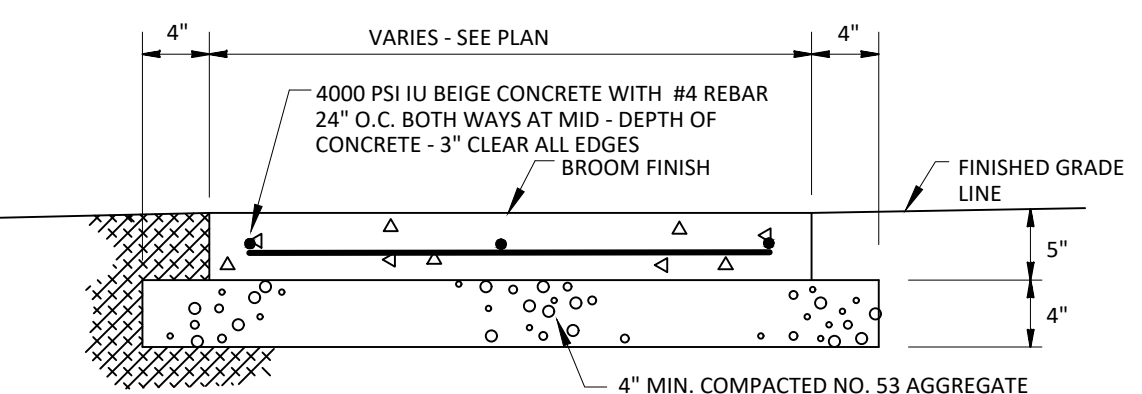
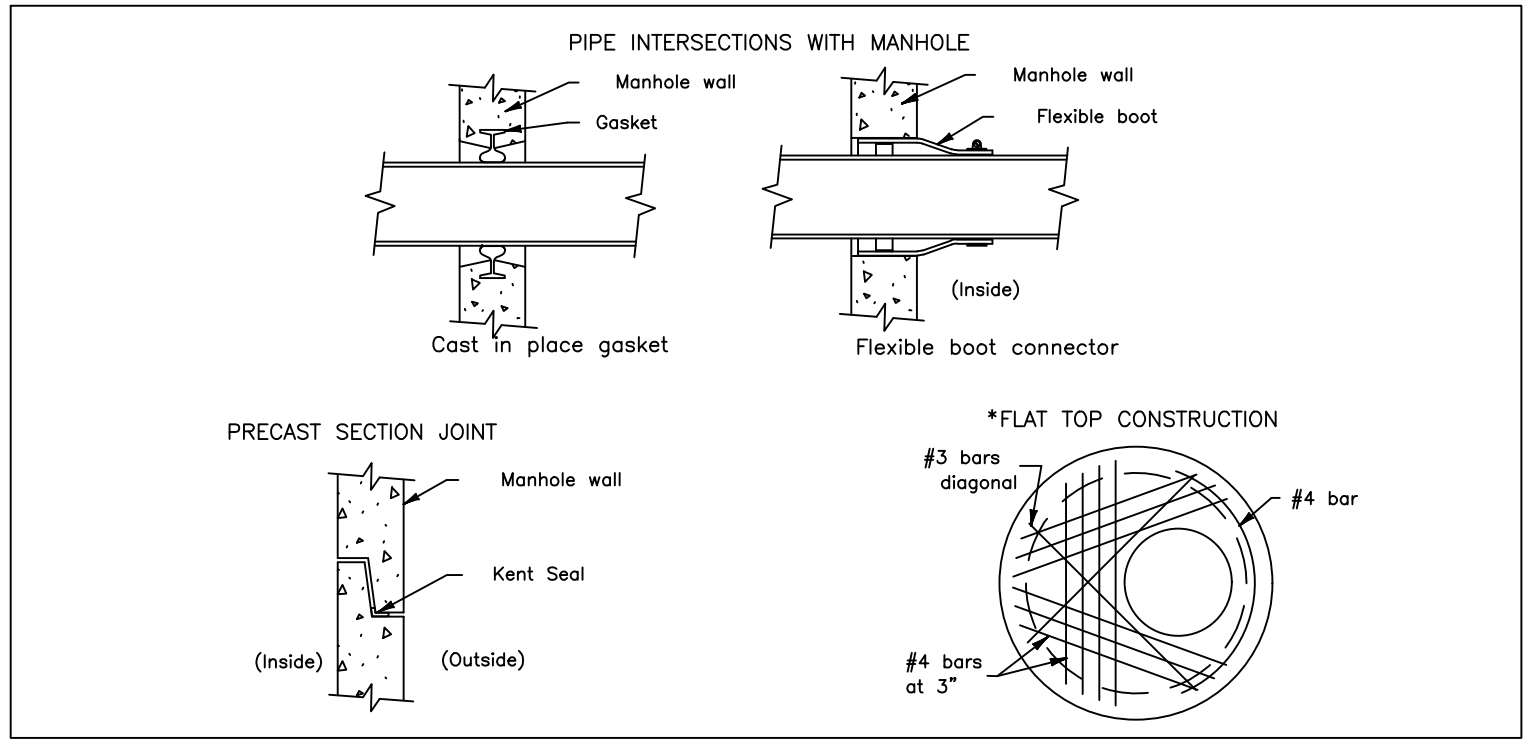
5 STREAM BANK RESTORATION N.T.S.



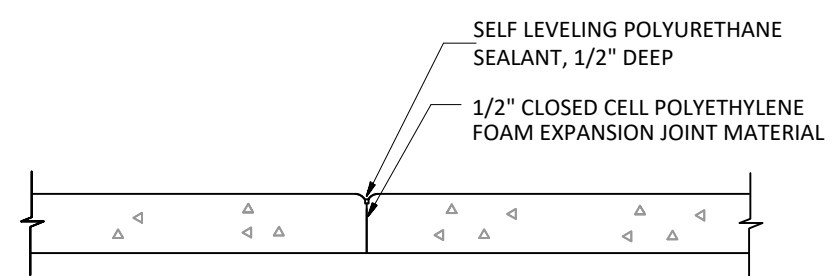
4 CROSS-OVER AIR RELEASE VALVES N.T.S.



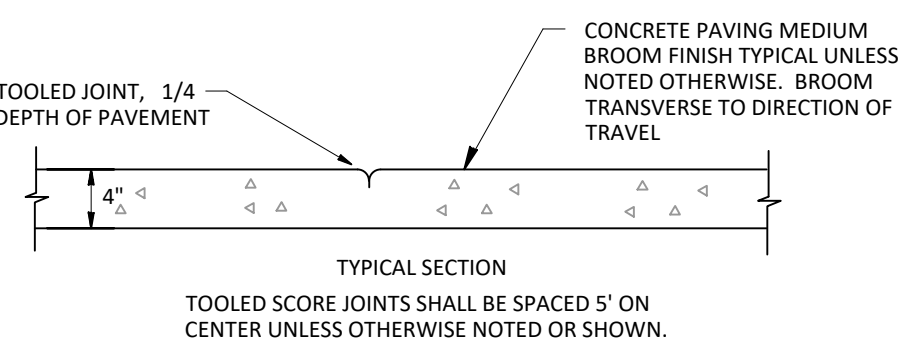
2 AIR RELEASE VALVE N.T.S.



CONCRETE PAVEMENT

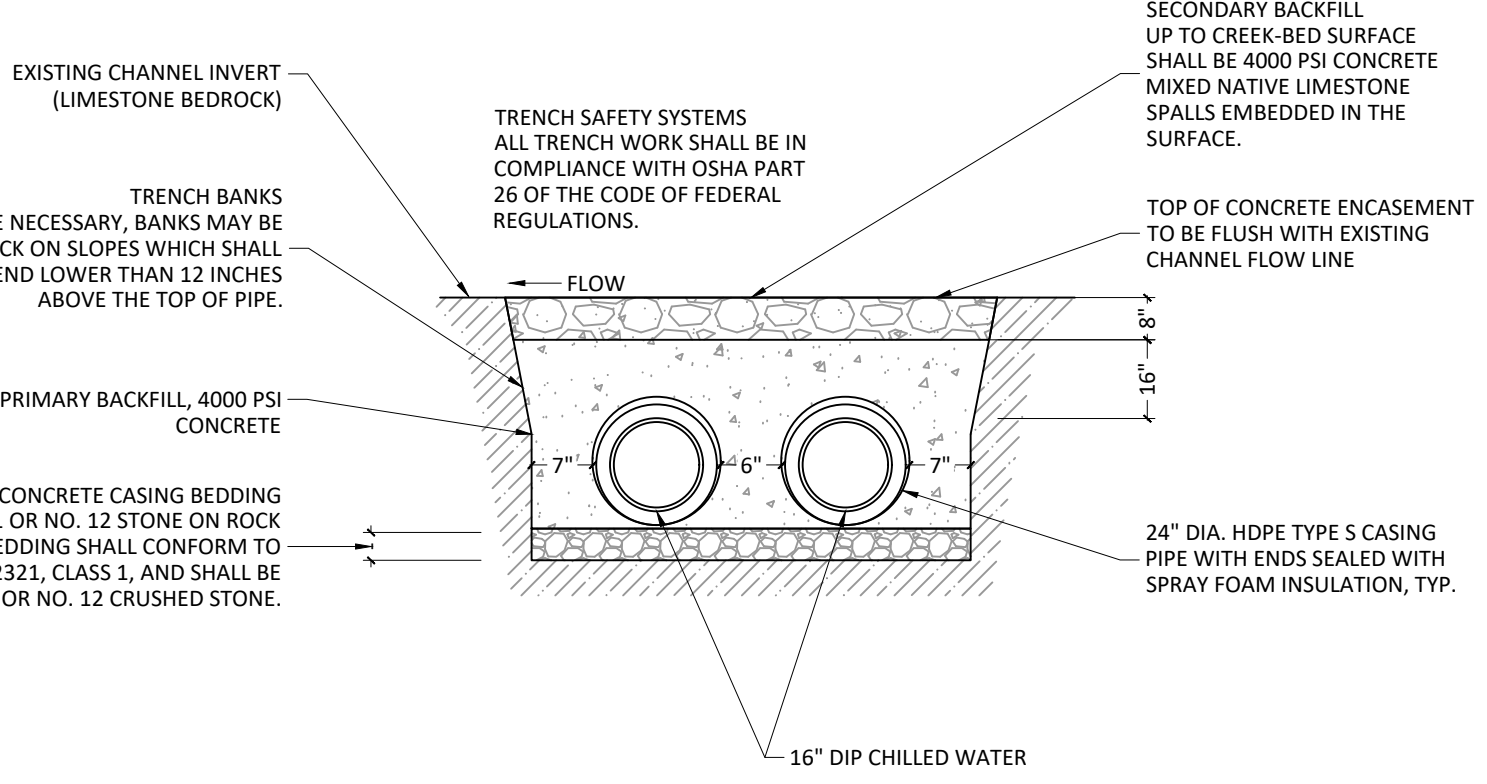


TYPICAL EXPANSION JOINT



SIDEWALK LONGITUDINAL SECTION AND JOINT DETAIL

1 CONCRETE SIDEWALK N.T.S.



3 STREAM CROSSING ENCASEMENT N.T.S.

**20230167 - BL299 Willkie C - Add Willkie Building to the Campus Chilled Water Loop**

150 N. Rose Avenue  
Bloomington, IN 47406  
BRCJ Project No: 11751

**SITE DETAILS**

SCALE: NOT TO SCALE

Date: 4/21/2025 Issue: 100% Construction Documents

REVISION SCHEDULE		
Rev. #	Rev. Description:	Issue Date
1	ISSUED FOR ADD NO. 2	5/09/2025

Drawn By: BDB  
Designed By: BDB  
Checked By: AEK